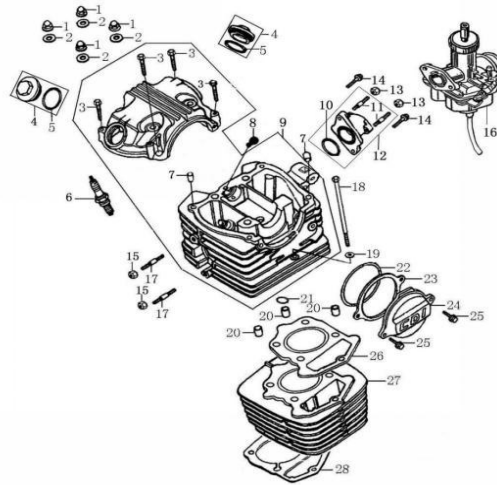


气缸头部件/气缸体部件CYLINDER HEAD ASSY/CYLINDER ASSEMBLY

序号	U8编码	编码(PART CODE)	中文名称(CHINESE DESCRIPTION)	英文名称(ENGLISH DESCRIPTION)	单价	数量	备注
						QTY	REMARK
1	P060001	91201-1006-0000X	CB125脚缸头盖盖形螺母M8(兰白锌)	NUT M8	0,44	4	
2	P060002	93301-80852018000	CB125盖形螺母铜垫圈8.5×2×18	WASHER 8.5×2×18	0,52	4	
3	P060003	B166740A06003570X	GB16674小盘螺栓M6×35(兰白锌)	BOLT M6×35	0,12	4	
4	P060004	11230-1006-00000G	CB125脚气门室盖(白铬)	COVER, VALVE CHAMBER		2	
5	P060005	90101-20350000300	CB125气门盖O形圈35×3(氟硅胶)	O-RING 35×3	0,56	2	
6	P060006	81300-1006-0000	CB125脚火花塞部件	SPARK PLUG	9,18	1	
7	P060007	91521-08001400000	70定位销8×14×6.3	PIN 8×14×6.3	0,07	2	
8	P060008	11015-1006-0000	CB125脚橡胶油塞	RUBBER, CASING CAP	0,29	1	
9	P060009	1122B-J025-000086	CB150D气缸头组合(8806)M6/54	CYLINDER HEAD ASSY	129,74	1	
10	P060010	90101-20335000300	CB125进气管O形圈33.5×3(氟硅胶)	O-RING 33.5×3		1	
11	P060011	91127-1006-0000	CB125脚进气管双头螺栓(普通 L:27mm)	BOLT		2	
12	P060012	15800-1006-0018	CB125脚进气管组合(JQ-18)	INLET PIPE		1	
13	P060013	B06170000600090X	GB6170螺母M6(兰白锌)	NUT 6	0,14	2	
14	P060014	B057830006002070X	GB5783螺栓M6×20(兰白锌)	BOLT M6×20	0,09	2	
15	P060015	B06170000600090X	GB6170螺母M6(兰白锌)	NUT 6	0,14	2	
16	P060016	17100-0000-0078	CG150D化油器(P227 手动无泵)	CARBURETOR		1	
17	P060017	91138-1008-00000X	CG125D缸头排气口双头螺栓M6×35(兰白锌)	BOLT M6×35	0,21	2	
18	P060018	91121-1006-00000X	CB125脚缸头箱体连接螺栓M6×110(兰白锌)	BOLT M6×110	0,32	1	
19	P060019	93301-3062201300B	70缸头盖铁垫圈6.2×2×13(白锌)	WASHER 6.2×2×13	0,02	1	
20	P060020	91521-10002000000	CG125脚定位销10×20	PIN 10×20	0,1	3	
21	P060021	90101-20100000160	CB125缸头气门导管O形圈10×1.6(氟硅胶)	O-RING 10×1.6	0,09	1	
22	P060022	90101-20750000265	CB125缸头左盖O形圈75×2.65(氟硅胶)	O-RING 75×2.65	0,97	1	
23	P060023	90202-1006-0000	CB125脚气缸头左盖密封垫	GASKET, L, CYLINDER HEAD COVER	0,17	1	
24	P060024	11227-1006-100186	CB125脚气缸头左盖(CDI 鲸鱼款 8806)	LEFT COVER, CYLINDER HEAD	12,25	1	
25	P060025	B166740A06002070X	GB16674小盘螺栓M6×20(兰白锌)	BOLT M6×20	0,1	2	
26	P060026	9022B-J025-0000	CB150D气缸头密封垫组合	GASKET ASSY, CYLINDER HEAD	2,79	1	
27	P060027	1110B-J025-000086	CB150D气缸体部件(缸标144 8806)	CYLINDER ASSEMBLY	45	1	
28	P060028	90205-J025-0000	CB150D气缸体密封垫	GASKET, CYLINDER BLOCK	0,71	1	
29							
30							
31							
32							
33							
34							
35							
36							
37							
38							
39							
40							
41							
42							

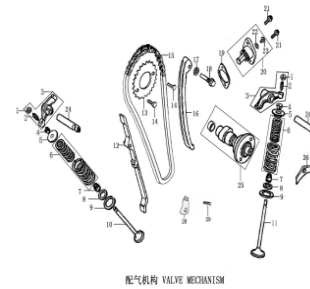


气缸头部件/气缸体部件
CYLINDER HEAD ASSY/CYLINDER ASSEMBLY

43						
44						
45						

配气机构 VALVE MECHANISM

序号	U8编码	编码(PART CODE)	中文名称(CHINESE DESCRIPTION)	英文名称(ENGLISH DESCRIPTION)	单价	数量 QTY	备注 REMARK
1	P060029	15403-1006-0000	CB125脚气门间隙调节螺母	NUT, VALVE CLEARANCE		2	
2	P060030	15404-1006-0000	CB125脚气门间隙调节螺钉	SCREW, VALVE CLEARANCE		2	
3	P060031	1540A-1006-0000	CB125脚气门摇臂组合	ROCKER ARM ASSEMBLY, VALVE	6,44	2	
4	P060032	15707-1008-0000	CG125D气门锁夹	VALVE COTTER	0,27	4	
5	P060033	15705-1006-0000	CB125脚气门弹簧座(上)	SPRING SEAT	0,62	2	
6	P060034	15710-1006-0000	CB125脚气门内外弹簧组合	INNER SPRING, ASSY	2,09	2	
7	P060035	1572B-1008-0000	CG125D挡油罩组合	SEAL, VALVE STEM	1,04	2	
8	P060036	15708-1008-0000	CG125D气门内弹簧座圈(下)	SPRING SEAT	0,18	2	
9	P060037	15706-1008-0000	CG125D气门外弹簧座圈(下)	RETAINER, VALVE SPRING	0,18	2	
10	P060038	15702-J025-0000	CB150D排气门	EXHAUST VALVE	9,19	1	
11	P060039	15701-J025-0000	CB150D进气门	INLET VALVE	6,12	1	
12	P060040	1553A-1006-0000	CB125脚踏链条导向板组合	GUIDE PLATE CHAIN	2,79	1	
13	P060041	15301-1006-0000	CB125脚正时从动链轮	TIMING DRIVEN SPROCKET	2,81	1	
14	P060042	B057830006001070B	GB5783螺栓M6×10(白锌)	BOLT M6×10	0,09	2	
15	P060043	1532B-1049-0000	CB125D正时链条组合(98)	SPROKET CHAIN	9,36	1	
16	P060044	1552A-1049-0000	CB125D链条张紧板组合	TENSION PLATE ASSY	3,86	1	
17	P060045	93301-70851514000	70导向销轴铝垫圈8.5×1.5×14	WASHER 8.5×1.5×14	0,05	1	
18	P060046	91109-1006-00000X	CB125脚踏张紧条芯轴螺栓(兰白锌)	BOLT	0,42	1	
19	P060047	90211-1049-0000	CB125D张紧器密封垫	GASKET, TENSIONER	0,09	1	
20	P060048	1554B-1049-000086	CB125D张紧器组合(8806)带螺栓和密封圈	LIFTER ASSY	6,23	1	
21	P060049	B000700106001670X	GB70.1螺钉M6×16(兰白锌)	SCREW M6×16	0,14	2	
22	P060050	90101-20090000180	CB125张紧器O形圈9×1.8(氟硅胶)	O-RING 9×1.8		1	
23	P060051	91120-1006-0000	CB125脚踏张紧调节螺栓M6×10	BOLT		1	
24	P060052	15402-1006-0100	CB125脚-2#气门摇臂轴(PDK专用)	ROCKER SHAFT	2,05	2	
25	P060053	15100-1006-0200	CB125脚凸轮轴部件(冷激铸铁 CJB轴承)	GAMP SHAFT COMP	25,43	1	
26	P060054	11201-1006-0000	CB125脚气门摇臂轴定位板	POSITION PLATE, ROCKER SHAFT	0,21	1	
27	P060055	B008190106001620B	GB819.1螺钉M6×16(白锌)	SCREW M6×16	0,07	1	
28	P060056	2143B-1049-0000	CB125D链条护板组合	ASSEMBLY, CHAIN PROTECT PLATE	1,06	1	
29	P060057	B057830006001670B	GB5783螺栓M6×16(白锌)	BOLT M6×16	0,61	1	
30							
31							
32							
33							
34							
35							
36							
37							
38							
39							
40							
41							

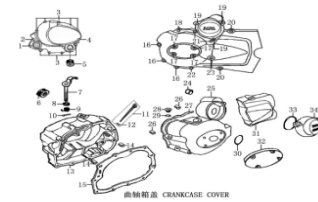


配气机构 VALVE MECHANISM

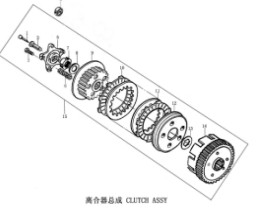
42							
43							
44							
45							

曲轴箱盖 CRANKCASE COVER

序号	U8编码	编码(PART CODE)	中文名称(CHINESE DESCRIPTION)	英文名称(ENGLISH DESCRIPTION)	单价	数量 QTY	备注 REMARK
1	P060058	B166740A06002570X	GB16674小盘螺栓M6×25(兰白锌)	BOLT M6×25	0.12	1	
2	P060059	B166740A06003570X	GB16674小盘螺栓M6×35(兰白锌)	BOLT M6×35	0.12	1	
3	P060060	B166740A06004070X	GB16674小盘螺栓M6×40(兰白锌)	BOLT M6×40	0.14	9	
4	P060061	B166740A06005070X	GB16674小盘螺栓M6×50(兰白锌)	BOLT M6×50	0.16	1	
5	P060062	12426-1008-0000	CG125D机油观察窗	OIL LELVE SIGHT WINDOW		1	
6	P060063	90304-1006-0000	CB125脚踏启动轴油封16×28×7(丁腈胶)	OIL SEAL 16×28×7	0.67	1	
7	P060064	2242A-1006-00000X	CB125离合器操纵纵臂组合(兰白锌)	CONTROLLING ARM ASSEMBLY, CLUTCH	11.01	1	
8	P060065	90306-1006-0000	CB125离合器操纵纵臂油封12×22×5	OIL SEAL 12×22×5	0.64	1	
9	P060066	22427-1006-0000	CB125离合器操纵纵臂弹簧	CLUTCH CONTROLLING ARM SPRING	0.17	1	
10	P060067	B0087901030120000	GB879.1销 3×12	PIN 3×12	0.54	1	
11	P060068	14301-1006-0000	CB125脚踏机油尺组合(白板 本色)整体式	OIL RULER ASSY	0.75	1	
12	P060069	90101-10180000300	CG125机油尺O形圈18×3(丁腈胶)	O-RING 18×3		1	
13	P060070	12421-1049-100185	CB125D右曲轴箱盖(ZONGSHEN 鲸鱼款 8805)电感式	COVER COMP. RIGHT CRANKCASE		1	
14	P060071	91521-08001400000	70定位销8×14×6.3	PIN 8×14×6.3	0.07	2	
15	P060072	90206-1006-0000	CB125脚踏右曲轴箱盖密封垫	GASKET, R. CRANKCASE COVER	1.42	1	
16	P060073	B166740A06002570X	GB16674小盘螺栓M6×25(兰白锌)	BOLT M6×25	0.12	3	
17	P060074	B008180006001220X	GB818螺钉M6×12(兰白锌)	SCREW M6×12		4	
18	P060075	B166740A06003570X	GB16674小盘螺栓M6×35(兰白锌)	BOLT M6×35	0.12	1	
19	P060076	B166740A06002070X	GB16674小盘螺栓M6×20(兰白锌)	BOLT M6×20	0.1	3	
20	P060077	B166740A06002870X	GB16674小盘螺栓M6×28(兰白锌)	BOLT M6×28	0.12	2	
21	P060078	B166740A06005570X	GB16674小盘螺栓M6×55(兰白锌)	BOLT M6×55	0.16	2	
22	P060079	B166740A06004570X	GB16674小盘螺栓M6×45(兰白锌)	BOLT M6×45	0.14	1	
23	P060080	B166740A06006070X	GB16674小盘螺栓M6×60(兰白锌)	BOLT M6×60	0.18	1	
24	P060081	92102-1008-0001	CG125D含油轴承(铁基)	BEARING	0.48	1	
25	P060082	12301-1049-100085	CB125D左曲轴箱前盖(白板 鲸鱼款 8805)	FRONT PART, L. CRANKCASE COVER	41.09	1	
26	P060083	91521-08001400000	70定位销8×14×6.3	PIN 8×14×6.3	0.07	2	
27	P060084	90204-1049-0000	CB125D左曲轴箱前盖密封垫	GASKET, L. CRANKCASE COVER	0.58	1	
28	P060085	12303-G011-000085	C100小视孔盖(8805)	CAP, SMALL VIEW HOLE	0.85	1	
29	P060086	90101-10132000265	C100小视孔盖O形圈13.2×2.65(丁腈胶)	O-RING 13.2×2.65	0.05	1	
30	P060087	90101-10274000265	C100大视孔盖O形圈27.4×2.65(丁腈胶)	O-RING 27.4×2.65	0.09	1	
31	P060088	12302-1049-070085	CB125D左曲轴箱后盖(CB125D-JY-21# 8805)	BACK PART, L. CRANKCASE COVER	14.11	1	
32	P060089	12307-1008-10010G	CG125D左前盖装饰盖(ZONGSHEN 鲸鱼款 白铬)	DECORATE COVER, L. CRANKCASE COVER		1	
33	P060090	90101-10630000265	CB125D双联盖O形圈63×2.65(丁腈胶)	O-RING 63×2.65	0.18	1	
34	P060091	12308-1049-100085	CB125D双联齿轮盖(ELECTRIC STARTER 鲸鱼款 8805)	COVER, REDUCTION GEAR	6.23	1	
36							
37							
38							
39							
40							
41							



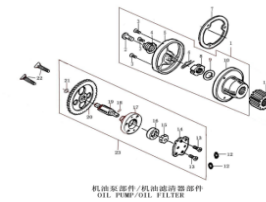
42							
43							
44							
45							
离合器总成 CLUTCH ASSY							
序号	U8编码	编码(PART CODE)	中文名称(CHINESE DESCRIPTION)	英文名称(ENGLISH DESCRIPTION)	单价	数量 QTY	备注 REMARK
1	P060092	22314-1008-0100	CG125D-2#离合器顶杆(五柱)	ROD, CLUTCH PUSH		1	附件
2	P060093	22401-1006-0000	CB125脚离合器分离轴套	SEPARATING AXLE SLEEVE		1	附件
3	P060094	B166740A06002270B	GB16674小盘螺栓M6×22(白锌)	BOLT M6×22		5	
4	P060095	92102-0000016003	轴承(16003)	BEARING (16003)	2,42	1	
5	P060096	22121-1006-0100	CB125脚离合器端盖(五柱)	END COVER, CLUTCH		1	
6	P060097	22142-1006-0000	CB125脚离合器弹簧	SPRING, CLUTCH		5	
7	P060098	91202-1006-0000	CB125脚离合器圆螺母	LOCK NUT, CLUTCH		1	附件
8	P060099	22004-1006-0000	CB125脚离合器碟形垫圈16.5×2×27	DISH WASHER, CLUTCH	0,13	1	附件
9	P060100	22105-1008-0100	CG125D离合器中心套(五柱)	CENTER SLEEVE, CLUTCH		1	
10	P060101	22214-1006-0000	CB125脚离合器主动摩擦片	DRIVE FRICTION DISK		5	
11	P060102	22215-1006-0000	CB125脚离合器从动摩擦片	OUTER FRICTION DISK A		4	
12	P060103	22122-1008-0200	CG125D离合器压盘(五柱)	PRESSURE PLATE, CLUTCH		1	
13	P060104	22002-1006-0000	CB125脚离合器花键垫圈	WASHER		1	附件
14	P060105	22150-1006-0000	CB125脚离合器外罩组合	OUT CASE ASSEMBLY, CLUTCH		1	
15	P060106	22000-1006-0702	CB125脚离合器总成(五柱 不带轴承)	CLUTCH ASSY	47,01	1	
16							
17							
18							
19							
20							
21							
22							
23							
24							
25							
26							
27							
28							
29							
30							
31							
32							
33							
34							
35							
36							
37							
38							
39							
40							



41						
42						
43						
44						
45						

机油泵部件/机油滤清器部件 OIL PUMP/OIL FILTER

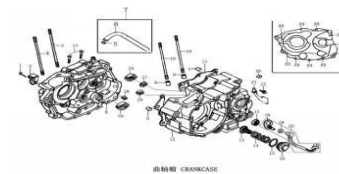
序号	U8编码	编码(PART CODE)	中文名称(CHINESE DESCRIPTION)	英文名称(ENGLISH DESCRIPTION)	单价	数量 QTY	备注 REMARK
1	P060107	14200-1006-0000	CB125脚机油滤清器部件	OIL FILTER, COMP	6,33	1	
2	P060108	14201-1006-0000	CB125脚机油滤清器出油管	OIL PIPE		1	
3	P060109	B008190105001220B	GB819.1螺钉M5×12(白锌)	SCREW M5×12		3	
4	P060110	14202-1006-0000	CB125脚机油滤清器出油管弹簧	SPRING, OIL PIPE		1	
5	P060111	14207-1006-0000	CB125脚机油滤清器盖	OIL FILTER COVER		1	
6	P060112	14208-1006-0000	CB125脚机油滤清器开口销	OPEN PIN		1	
7	P060113	90209-1006-0000	CB125脚机油滤清器端盖密封垫	GASKET, OIL FILTER	0,06	1	
8	P060114	91203-1008-0000	CG125D机油滤清器薄螺母	NUT		1	
9	P060115	22004-1006-0000	CB125脚离合器碟形垫圈16.5×2×27	DISH WASHER, CLUTCH	0,13	1	
10	P060116	14205-1006-0000	CB125脚机油滤清器体	OIL FILTER BODY		1	
11	P060117	23101-1006-0000	CB125脚主动齿	PRIMARY DRIVE GEAR	6,51	1	
12	P060118	90101-10094000240	CG125机油泵O形圈9.4×2.4(丁腈胶)	O-RING 9.4×2.4	0,05	2	
13	P060119	B008180004001020B	GB818螺钉M4×10(白锌)	SCREW M4×10		2	
14	P060120	14108-1008-0000	CG125D机油泵盖板	OIL PUMP COVER		1	
15	P060121	14111-1008-0000	CG125D机油泵内转子	INNER ROTOR, OIL PUMP		1	
16	P060122	14112-1008-0000	CG125D机油泵外转子	OUTER ROTOR, OIL PUMP		1	
17	P060123	14110-1008-0000	CG125D机油泵体(电感式)	OIL PUMP BODY		1	
18	P060124	B0011902025100000	GB119.2销2.5×10	PIN 2.5×10		1	
19	P060125	14107-1008-0000	CG125D机油泵油泵轴(电感式)	SHAFT, OIL PUMP		1	
20	P060126	1410B-1006-0000	CB125脚机油泵齿轮组合	OIL PUMP GEAR ASS.		1	
21	P060127	B0089600060000000	GB896挡圈6	CIRCLIP 6		1	
22	P060128	B008190106003020B	GB819.1螺钉M6×30(白锌)	SCREW M6×30	0,13	2	
23	P060129	14100-1006-0000	CB125脚机油泵部件(电感式)	OIL PUMP ASSY	6,9	1	
24							
25							
26							
27							
28							
29							
30							
31							
32							
33							
34							
35							
36							
37							
38							
39							



40							
41							
42							
43							
44							
45							

曲轴箱 CRANKCASE

序号	U8编码	编码(PART CODE)	中文名称(CHINESE DESCRIPTION)	英文名称(ENGLISH DESCRIPTION)	单价	数量 QTY	备注 REMARK
1	P060130	B166740A06006070X	GB16674小盘螺栓M6×60(兰白锌)	BOLT M6×60	0,18	1	
2	P060131	22422-1006-00010X	CB125脚-2#离合器钢索支架(兰白锌)	HOLDER, CLUTCH CABLE	0,77	1	
3	P060132	91101-1006-0000	CB125脚气缸双头螺栓A(214mm)	CYLINDER STUD BOLT A	1,5	1	
4	P060133	91101-1006-0100	CB125脚-2#气缸双头螺栓A(215mm PDK专用)	CYLINDER STUD BOLT A		1	
5	P060134	18097-1008-0000	CG125D废气循环管1卡箍	CLAMP		1	
6	P060135	12105-1008-0001	CG125D-1#通气管(复合层材料)	BREATHER PIPE		1	
7	P060136	12130-1008-0001	CG125D-1#通气管组件(复合层材料 卡箍1个)	PIPE ASSY	1,74	1	
8	P060137	1222B-1049-000085	CB125D右曲轴箱组合(8805)	RIGHT CRANKCASE BLOCK		1	
9	P060138	91521-10001400000	CG125脚定位销10×14	PIN 10×14	0,09	4	
10	P060139	91102-1006-0100	CB125脚-2#气缸双头螺栓B(228mm PDK专用)	CYLINDER STUD BOLT B	1,53	2	
11	P060140	90208-1049-0000	CB125D曲轴箱密封垫	GASKET, CRANKCASE	2,89	1	
12	P060141	1212B-1049-000085	CB125D左曲轴箱组合(8805)	LEFT CRANKCASE BLOCK		1	
13	P060142	1431B-1006-0000	CB125脚机油过滤网组合	STRAINER, OIL FILTER	0,64	2	
14	P060143	14221-1006-0000	CB125脚机油过滤网弹簧	SPRING, OIL FILTER STRAINER	0,12	1	
15	P060144	90101-20350000300	CB125气门盖O形圈35×3(氟硅胶)	O-RING 35×3	0,56	1	
16	P060145	11230-1006-00000W	CB125脚气门室盖(抛丸钝化)	COVER, VALVE CHAMBER	1,42	1	
17	P060146	90301-1006-0000	CB125脚踏档臂油封14×28×7(丁腈胶)	OIL-SEAL 14×28×7	0,67	1	
18	P060147	88001-1049-0600	CB125D档显板(五档循环档)	GEARSHIFT SWITCH PLATE		1	
19	P060148	91204-1049-0000	CB125D档显板螺母M10	NUT		1	
20	P060149	8803B-1049-060045	CB125D档显线束组合(五档循环 L:450)接口D03	GEARSHIFT SWITCH LAMP	6,07	1	
21	P060150	12103-1008-0000	CG125D档线片	POSITION PLATE	0,48	1	
22	P060151	B166740A06001270B	GB16674小盘螺栓M6×12(白锌)	BOLT M6×12	0,07	1	
23	P060152	B166740A06005070X	GB16674小盘螺栓M6×50(兰白锌)	BOLT M6×50	0,16	10	
24	P060153	B166740A06003270X	GB16674小盘螺栓M6×32(兰白锌)	BOLT M6×32	0,12	2	
25	P060154	92102-1008-0001	CG125D含油轴承(铁基)	BEARING	0,48	1	
26	P060155	92102-0000006204	轴承(6204)	BEARING (6204)	3,6	1	
27	P060156	90303-1006-0000	CB125脚踏轴油封20×34×7(丁腈胶)	OIL SEAL 20×34×7	0,72	1	
28	P060157	92102-000NK152312	滚针轴承(NK152312)	BEARING (NK152312)	1,66	1	
29	P060158	92102-0000006202Z	轴承(6202Z)	BEARING (6202Z)	2,61	1	
30	P060159	92102-0000006006	轴承(6006)	BEARING (6006)	4,64	1	
31							
32							
33							
34							
35							
36							
37							
38							

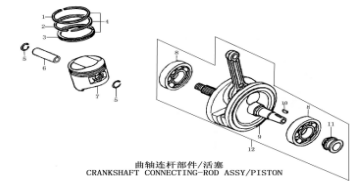


曲轴箱 CRANKCASE

39							
40							
41							
42							
43							
44							
45							

曲轴连杆部件/活塞 CRANKSHAFT CONNECTING-ROD ASSY/PISTON

序号	U8编码	编码(PART CODE)	中文名称(CHINESE DESCRIPTION)	英文名称(ENGLISH DESCRIPTION)	单价	数量 QTY	备注 REMARK
1	P060160	13103-J025-0000	CB150D活塞环一	PISTON RING 1		1	
2	P060161	13104-J025-0000	CB150D活塞环二	PISTON RING 2		1	
3	P060162	13120-J025-0000	CB150D油环组合	OIL RING ASSY		1	
4	P060163	1310A-J025-0000	CB150D活塞环总成	PISTON RING COMP	9,01	1	
5	P060164	91401-I006-0000	CB125脚踏塞销挡圈	CLIP, PISTON PIN	0,05	2	
6	P060165	13102-J025-0000	CB150D活塞销	PIN PISTON	1,67	1	
7	P060166	13101-J025-0200	CB150D-2#活塞(PDK专用)	PISTON	9,35	1	
8	P060167	92102-00063-28-P5	轴承(63/28/P5)	BEARING (63/28/P5)		2	
9	P060168	13220-I049-2002	CB125D-5#曲轴连杆组合(无轴承、半圆键、主动齿)立多	CONNECTING ROD COMP 3		1	
10	P060169	91601-I008-0000	CG125D半圆键25×14×4	SEMICIRCULAR KEY		1	
11	P060170	13222-I049-0000	CB125D正时主动链轮(滚子)	HUB DUMP CHAIN SPROCKET		1	
12	P060171	1320B-I049-2320	CB125D-5#曲轴连杆部件(立多禄KT)左曲柄仿CG	CRANKSHAFT CONNECTING-ROD ASSY	95,46	1	
13							
14							
15							
16							
17							
18							
19							
20							
21							
22							
23							
24							
25							
26							
27							
28							
29							
30							
31							
32							
33							
34							
35							
36							
37							



曲轴连杆部件/活塞
CRANKSHAFT CONNECTING-ROD ASSY/PISTON

38						
39						
40						
41						
42						
43						
44						
45						

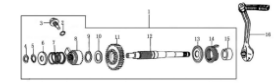
主副轴组合 TRANSMISSION MAIN, COUNTER SHAFT

序号	U8编码	编码(PART CODE)	中文名称(CHINESE DESCRIPTION)	英文名称(ENGLISH DESCRIPTION)	单价	数量 QTY	备注 REMARK
1	P060172	23220-1006-0000	CB125脚主轴组合	MAIN SHAFT, TRANSMISSION		1	
2	P060173	23240-1006-0000	CB125脚副轴组合	COUNTERSHAFT TRANSMISSION		1	
3	P060174	93301-61521025000	CB125 主轴止推垫圈 15.2×1×25	WASHER 15.2×1×25	0,06	1	
4	P060175	23222-1008-0002	CG125D五档主轴2档齿轮	GEAR M-2		1	
5	P060176	23222-1008-0005	CG125D五档主轴5档齿轮	GEAR M-5		1	
6	P060177	23223-1006-0000	CB125脚齿轮隔圈17.3(20)×1.6×26	WASHER	0,07	3	
7	P060178	B0089401200000000	GB894.1挡圈20	CIRCLIP 20		3	
8	P060179	23222-1008-0004	CG125D五档主轴4档齿轮	GEAR M-4		1	
9	P060180	23222-1008-0003	CG125D五档主轴3档齿轮	GEAR M-3		1	
10	P060181	23221-1006-0000	CB125脚主轴芯轴	TRANSMISSION MAIN SHAFT		1	
11	P060182	93301-62020527000	CB125 主轴止推垫圈 20.2×0.5×27	WASHER 20.2×0.5×27	0,05	1	
12	P060183	23231-1008-0000	CG125D 主轴起动齿轮组合	FINAL SHAFT	5,59	1	
13	P060184	B057830006001070B	GB5783螺栓M6×10(白锌)	BOLT M6×10	0,09	2	
14	P060185	23402-1006-0000	CB125脚主动链轮固定板	FIXING PLATE, DRIVE SPROCKET	0,23	1	
15	P060186	23401-1008-0008	CG125D主动链轮(428.15)	DRIVE SPROCKET	6,62	1	
16	P060187	93301-62021027000	70启动轴垫圈20.2×1.0×27	WASHER 20.2×1.0×27		2	
17	P060188	23242-1006-0002	CB125脚副轴2档齿轮	GEAR C-2		1	
18	P060189	23203-1006-0002	CB125脚副轴2档齿轮衬套	GEAR BUSH		1	
19	P060190	23242-1008-0005	CG125D五档副轴5档齿轮	GEAR C-5		1	
20	P060191	23241-1006-0000	CB125脚-1#副轴芯轴	TRANSMISSION COUNTER SHAFT		1	
21	P060192	23242-1008-0004	CG125D五档副轴4档齿轮	GEAR C-4		1	
22	P060193	23242-1008-0003	CG125D五档副轴3档齿轮	GEAR C-3		1	
23	P060194	93301-61670524000	CB125副轴止推垫圈 16.7×0.5×24	WASHER 16.7×0.5×24		2	
24	P060195	23203-1008-0001	CG125D副轴1档齿轮衬套	GEAR BUSH		1	
25	P060196	23242-1008-0001	CG125D五档副轴1档齿轮	GEAR C-1		1	
26	P060197	23203-1008-0003	CG125D副轴启动齿圈衬套	GEAR BUSH	0,43	1	
27	P060198	23248-1008-0000	CG125D副轴启动过桥齿圈	GEAR	3,06	1	
28	P060199	93301-61521030000	CB125副轴止推垫圈 15.2×1×30	WASHER 15.2×1×30	0,07	1	
29	P060200	23200-1006-0000	CB125脚-1#主副轴组合(副轴147)	TRANSMISSION MAIN, COUNTER SHAFT	73,91	1	
30							
31							
32							
33							
34							
35							
36							

37							
38							
39							
40							
41							
42							
43							
44							
45							

启动轴总成 KICK STARTING SHAFT ASSEMBLY

序号	U8编码	编码(PART CODE)	中文名称(CHINESE DESCRIPTION)	英文名称(ENGLISH DESCRIPTION)	单价	数量 QTY	备注 REMARK
1	P060201	21100-1006-0000	CB125启动轴总成(常用Z=29)	KICK STARTING SHAFT ASSEMBLY	22.49	1	
2	P060202	90101-10118000265	CB125启动轴螺栓O形圈11.8×2.65(丁腈胶)	O-RING 11.8×2.65		1	附件
3	P060203	91108-1006-00000X	CB125启动轴定位螺栓M12×25(兰白锌)	BOLT M12×25		1	附件
4	P060204	93301-51211018000	CG125D启动轴垫圈12.1×1×18	WASHER 12.1×1×18		1	附件
5	P060205	B0089401160000000	GB894.1挡圈16	CIRCLIP 16		1	
6	P060206	21123-1006-0000	CB125脚棘轮导板	GUIDE PLATE		1	
7	P060207	21119-1006-0000	CB125脚启动棘轮弹簧	SPRING, KICK STARTING RATCHET		1	
8	P060208	21118-1006-0000	CB125脚启动棘轮	STARTING RATCHET		1	
9	P060209	91402-1008-0000	CG125D启动轴弹性挡圈φ18.5×1.2×φ22.4	CIRCLI φ18.5×1.2×φ22.4		1	
10	P060210	93301-62000527000	CG125启动轴垫圈20×0.5×27	WASHER 20×0.5×27		1	
11	P060211	21117-1008-0000	CG125D启动齿轮	GEAR, KICK STARTER		1	
12	P060212	21107-1006-0000	CB125脚启动轴芯轴	PIVOT, KICK STARTING SHAFT		1	
13	P060213	21104-1006-0000	CB125脚启动轴弹簧座	SEAT, SPRING, KICK STARTING SH		1	
14	P060214	21106-1008-0000	CG125D启动轴复位弹簧	RETURN SPRING, KICK STARTING S		1	
15	P060215	21102-1006-0000	CB125脚启动轴衬套	SLEEVE		1	
16	P060216	21200-1008-0009	CG125D启动杆部件(QD-9)	START-UP BAR COMP		1	
17							
18							
19							
20							
21							
22							
23							
24							
25							
26							
27							
28							
29							
30							
31							
32							
33							
34							
35							

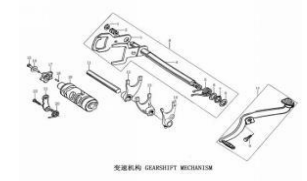


启动轴总成 KICK STARTING SHAFT ASSEMBLY

36							
37							
38							
39							
40							
41							
42							
43							
44							
45							

变速机构 GEARSHIFT MECHANISM

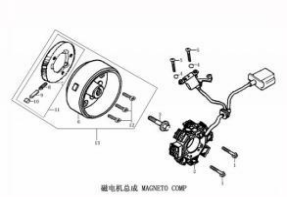
序号	U8编码	编码(PART CODE)	中文名称(CHINESE DESCRIPTION)	英文名称(ENGLISH DESCRIPTION)	单价	数量 QTY	备注 REMARK
1	P060217	B0089401120000000	GB894.1挡圈12	CIRCLIP 12		1	
2	P060218	24303-1008-0000	CG125D换挡板弹簧	SPRING, GEARSHIFT PLATE		1	
3	P060219	24319-1008-0000	CG125D换挡板(五档循环档)	GEARSHIFT PLATE		1	
4	P060220	24301-1008-00000C	CG125D换挡轴组合(五档循环档 彩锌)	GEARSHIFT SHAFT COMP		1	
5	P060221	24302-1008-0000	CG125D换挡回位弹簧	RETURN SPRING		1	
6	P060222	93301-51400520000	CB125脚踏换挡臂垫圈14×0.5×20	WASHER 14×0.5×20		2	
7	P060223	B0089401140000000	GB894.1挡圈14	CIRCLIP 14		1	
8	P060224	24300-1008-00010C	CG125D换挡臂部件(五档循环档 彩锌)	GEARSHIFT LEVER COMP	6,67	1	
9	P060225	B057830006002070G	GB5783螺栓M6×20(白铬)	BOLT M6×20	0,09	1	
10	P060226	24400-1008-0016	CG125D变速踏板部件(BT-16)	GEARSHIFT SHAFT		1	
11	P060227	24107-1006-0000	CB125脚踏拨叉轴	SHAFT, GEARSHIFT FORK	1,87	1	
12	P060228	24104-1006-0000	CB125脚踏副轴右拨叉	RIGHT FORK, COUNTERSHAFT	3,45	1	
13	P060229	24106-1006-0000	CB125脚踏主轴拨叉	CENTER FORK, MAINSHAFT	3,45	1	
14	P060230	24105-1006-0000	CB125脚踏副轴左拨叉	LEFT FORK, COUNTERSHAFT	3,46	1	
15	P060231	91126-1008-00000B	CG125D五星板紧固螺栓(白锌)	BOLT	0	1	
16	P060232	B0009300060000000	GB93弹垫6	WASHER φ6	0,03	1	
17	P060233	24202-1008-0600	CG125D五星板(五档循环档)	STOPPING PLATE	2,53	1	
18	P060234	B0011901040100000	GB119.1销4×10	PIN 4×10	0,07	1	
19	P060235	24213-1006-0600	CB125脚踏变速鼓(五档循环档)档显	GEARSHIFT DRUM	5,23	1	
20	P060236	24304-1006-0100	CB125脚踏-2#定位板弹簧	SPRING, LOCATING PLATE	0,17	1	
21	P060237	2434A-1008-0400	CG125D-2#定位板组合(五档循环档及五档非循环档)	LOCATING PLATE ASSY	0,93	1	
22	P060238	91115-1008-00000B	CG125D档位定位板螺栓(五档循环档 白锌)	BOLT FIXING PLATE		1	
23							
24							
25							
26							
27							
28							
29							
30							
31							
32							
33							



35							
36							
37							
38							
39							
40							
41							
42							
43							
44							
45							

磁电机总成 MAGNETO COMP

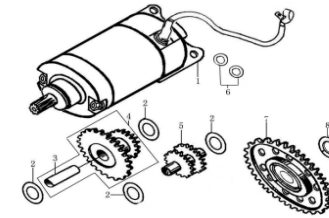
序号	U8编码	编码(PART CODE)	中文名称(CHINESE DESCRIPTION)	英文名称(ENGLISH DESCRIPTION)	单价	数量 QTY	备注 REMARK
1	P060239	B166740A06002870B	GB16674小盘螺栓M6×28(白锌)	BOLT M6×28	0,12	2	
2	P060240	82120-1049-010043	CB125D磁电机定子组合(12V8极全波交流大盒 L1:430)挂	STATOR ASSY,MAGNETO	27,34	1	
3	P060241	91106-1008-0000	CG125D磁电机安装螺栓M10×36	BOLT M10×36		1	
4	P060242	B0009300040000000	GB93弹垫4	WASHER φ4	0,03	2	
5	P060243	B008230004001020B	GB823螺钉M4×10(白锌)	SCREW M4×10	0,03	2	
6	P060244	82130-1049-0301	CB125D-2#磁电机转子组合(12V8极 不带超越离合器)	ROTOR ASSY,MAGNETO	51,16	1	
7	P060245	21309-1049-0000	CB125D启动离合器本体	ASSEMBLY, SPIDER		1	
8	P060246	21303-1049-0000	CB125D启动离合器滚柱弹簧	SPRING		3	
9	P060247	21305-1049-0000	CB125D启动离合器弹簧套/顶销	CONE BILOCKAGE		3	
10	P060248	21304-1049-0000	CB125D启动离合器滚柱	CLUTCH ROLLER		3	
11	P060249	21300-1049-0000	CB125D超越离合器部件	ASSEMBLY, OVERRUNNING CLUTCH		1	
12	P060250	91197-1008-00000C	CG125D超越离合器紧固螺钉M8×18(彩锌)	BOLT M8×18		3	
13	P060251	82130-1049-0300	CB125D-2#磁电机转子组合(12V8极)	ROTOR ASSY,MAGNETO	28,19	1	
14							
15							
16							
17							
18							
19							
20							
21							
22							
23							
24							
25							
26							
27							
28							
29							
30							
31							
32							
33							



34							
35							
36							
37							
38							
39							
40							
41							
42							
43							
44							
45							

电启动机构 ELECTRIC STARTING MECHANISM

序号	U8编码	编码(PART CODE)	中文名称(CHINESE DESCRIPTION)	英文名称(ENGLISH DESCRIPTION)	单价	数量 QTY	备注 REMARK
1	P060252	82200-1049-010451	CB125D启动电机部件(机座8805 机壳8805 无字 圆形单	STARTING MOTOR ASSY	81,97	1	
2	P060253	93301-51050518000	CG125D双联齿轮垫圈10.5×0.5×18	WASHER 10.5×0.5×18	0,13	4	
3	P060254	21402-1049-0000	CB125D双联齿轮轴	SHAFT, REDUCTION		1	
4	P060255	2140A-1049-0000	CB125D双联齿轮组合(一)	GEAR, REDUCTION, 1	8,09	1	
5	P060256	21401-1049-0000	CB125D双联齿轮(二)	GEAR, REDUCTION, 2	6,8	1	
6	P060257	82202-1049-0000	CB125D电机安装座圈7.95	WASHER	0,39	2	
7	P060258	2142A-1049-0100	CB125D-2#启动大齿轮组合	PLATE GEAR ASSY	17,88	1	
8	P060259	93301-E2203534000	CB125D-2#盘形齿垫圈22×3.5×34	WASHER 22×3.5×34	0,99	1	
9							
10							
11							
12							
13							
14							
15							
16							
17							
18							
19							
20							
21							
22							
23							
24							
25							
26							
27							
28							
29							
30							
31							
32							

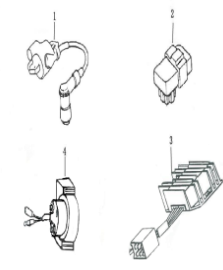


电启动机构
ELECTRIC STARTING MECHANISM

33							
34							
35							
36							
37							
38							
39							
40							
41							
42							
43							
44							
45							

电零件 ELECTRIC

序号	U8编码	编码(PART CODE)	中文名称(CHINESE DESCRIPTION)	英文名称(ENGLISH DESCRIPTION)	单价	数量 QTY	备注 REMARK
1	P060260	81100-1008-000050	高压包MG03B L:500	IGNITION COIL		1	
2	P060261	81200-1008-0000	点火器MD125-3B	C. D. I	9,07	1	
3	P060262	83100-1008-010020	整流调压器MT12V8-ZS05B	RECTIFIER		1	
4	P060263	82290-1049-000016	继电器MQJ10-ZS01A	RELAY	9,26	1	
5							
6							
7							
8							
9							
10							
11							
12							
13							
14							
15							
16							
17							
18							
19							
20							
21							
22							
23							
24							
25							
26							
27							
28							

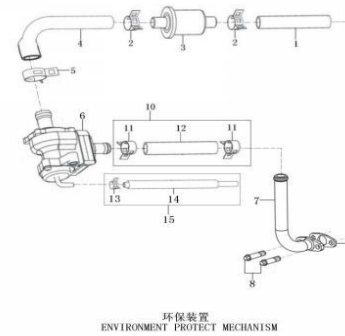


电零件 ELECTRIC

29						
30						
31						
32						
33						
34						
35						
36						
37						
38						
39						
40						
41						
42						
43						
44						
45						

废气再循环系统 EXHAUST GAS RECIRCULATION SYSTEM

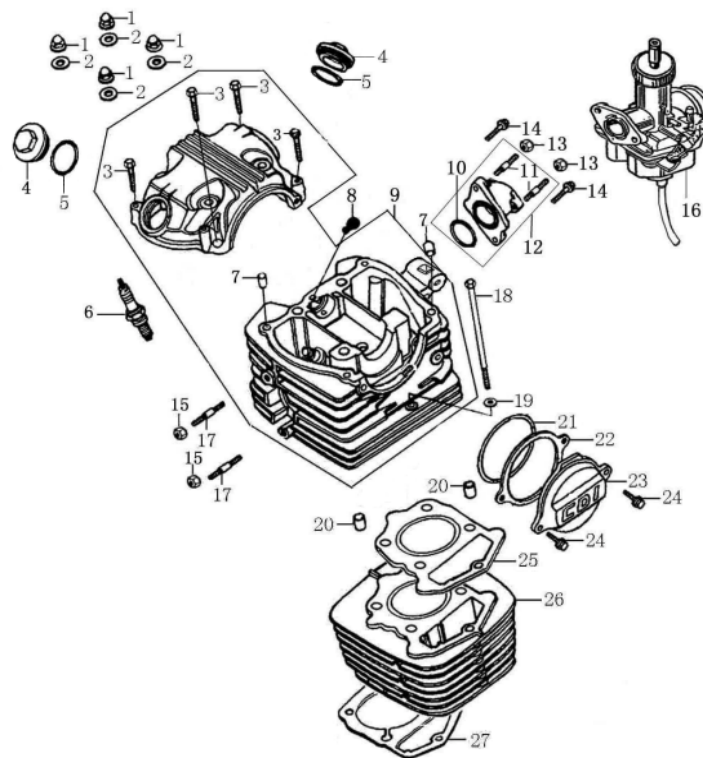
序号	U8编码	编码(PART CODE)	中文名称(CHINESE DESCRIPTION)	英文名称(ENGLISH DESCRIPTION)	单价	数量 QTY	备注 REMARK
1	P060264	16156-1008-0100	CG125D二次空滤器连接胶管 II (14×9×400)	CONNECTING PIPE		1	
2	P060265	16157-1008-0000	CG125D二次空滤器连接胶管卡圈 14	HOOP		2	
3	P060266	16160-1008-0000	CG125D二次空滤器部件	SEC.AIR BOX VALVE		1	
4	P060267	16156-1008-0000	CG125D二次空滤器连接胶管 I (14×9×230(35))	CONNECTING PIPE		1	
5	P060268	16157-1008-0100	CG125D二次空滤器连接胶管卡圈 15.3	HOOP		1	
6	P060269	18090-J034-0001	CG150D空气泵(带防尘胶套)	GAS PUMP		1	
7	P060270	1809B-LA66-0000Y	CG200-A废气循环铁管组合(电泳黑漆)	IRON PIPE		1	
8	P060271	B166740A06001670X	GB16674小盘螺栓M6×16(兰白锌)	BOLT M6×16	0.09	2	
9	P060272	90268-DA80-0000	PW70废气循环铁管纸垫	PAPER GASKET	0.18	1	
10	P060273	18110-LA66-0000	CG200-A废气循环橡胶管组件 I (300)	RUBBER PIPE		1	
11	P060274	18097-1008-0000	CG125D废气循环管 I 卡箍	CLAMP		2	
12	P060275	18092-LA66-0000	CG200-A废气循环橡胶管 I (300)	RUBBER PIPE		1	
13	P060276	18097-1008-0100	CG125D废气循环管 II 卡箍	CLAMP		1	
14	P060277	18092-1008-0103	CG125D废气循环橡胶管 II -4#(φ9×φ4×420)	RUBBER PIPE		1	
15	P060278	18110-1008-0103	CG125D废气循环橡胶管组件 II -4#(φ9×φ4×420)	RUBBER PIPE		1	



环保装置
ENVIRONMENT PROTECT MECHANISM

CYLINDER HEAD/CYLINDER ASSEMBLY ГОЛОВКА ЦИЛИНДРА / ЦИЛИНДР

S/N	ENGLISH DESCRIPTION	QTY FOR ONE ENGINE	REMARK
1	NUT M8	4	Гайка
2	WASHER 8.5×2×18	4	Шайба
3	BOLT M6×35	4	Болт
4	COVER, VALVE CHAMBER	2	Пробка головки
5	O-RING 35×3	2	Кольцо уплотнительное 35*3
6	SPARK PLUG	1	Свеча зажигания
7	PIN 8×14×6.3	2	Втулка 8×14×6.3
8	RUBBER, CASING CAP	1	Заглушка левой крышки картера
9	CYLINDER HEAD ASSY	1	Головка цилиндра в сборе
10	O-RING 33.5×3	1	Кольцо уплотнительное 33,5*3
11	BOLT	2	Болт
12	INLET PIPE	1	Впускной патрубок
13	NUT M6	2	Гайка
14	BOLT M6×20	2	Болт
15	NUT M8	2	Гайка
16	CARBURETOR	1	Карбюратор
17	BOLT M8×36	2	Болт
18	BOLT M6×125	1	Болт
19	WASHER 6.2×2×13	1	Шайба
20	PIN 10×20	2	Втулка 10×20
21	O-RING 75×2.65	1	Кольцо уплотнительное 75*2,65
22	GASKET,L,CYLINDER HEAD CO	1	Прокладка левой крышки головки цилиндра
23	LEFT COVER, CYLINDER HEAD	1	Левая крышка головки



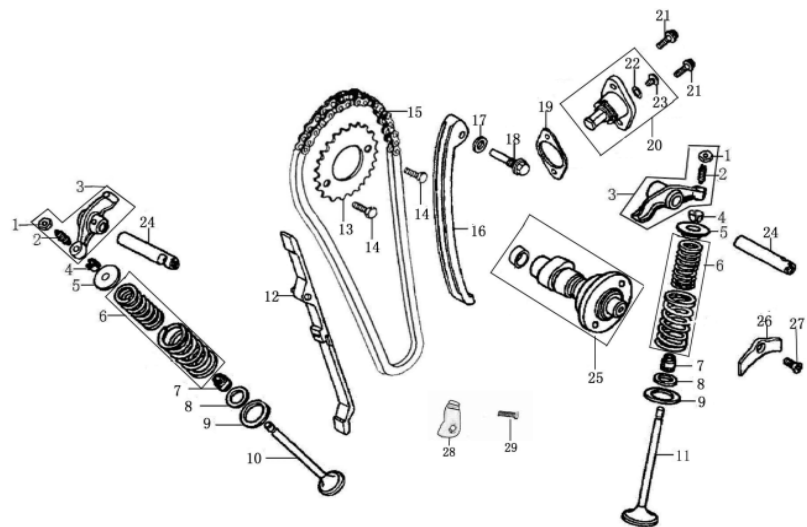
气缸头部件/气缸体部件
CYLINDER HEAD ASSY/CYLINDER ASSEMBLY

24	BOLT M6×20	2	Болт
25	GASKET ASSY,CYLINDER HEAT	1	Прокладка головки цилиндра
26	CYLINDER BLOCK ASSEMBLY	1	Цилиндр 65,5
27	GASKET,CYLINDER BLOCK	1	Прокладка цилиндра

VALVE MECHANISM

ГАЗОРАСПРЕДЕЛИТЕЛЬНЫЙ МЕХАНИЗМ

S/N	ENGLISH DESCRIPTION	QTY FOR ONE ENGINE	REMARK
1	NUT, VALVE CLEARANCE	2	Гайка
2	SCREW, VALVE CLEARANCE	2	Винт регулировочный
3	ROCKER ARM ASSEMBLY, VAL	2	Рокер
4	VALVE LOCKER	4	Сухарь
5	SPRING SEAT	2	Тарелка пружины верхняя
6	INNER SPRING, ASSY	2	Пружина
7	SEAL, VALVE STEM	2	Маслосъемный колпачек
8	SPRING SEAT	2	Опорная шайба
9	OUTER VALVE SPRING RETAIN	2	Опорная шайба
10	EXHAUST VALVE	1	Клапан выпускной
11	INTAKE VALVE	1	Клапан впускной
12	GUIDE PLATE CHAIN	1	Упакоитель цепи ГРМ
13	TIMING DRIVEN SPROCKET	1	Звездочка распредвала ГРМ
14	BOLT M6×12	2	Болт
15	SPROKET CHAIN	1	Цепь ГРМ
16	TENSION PLATE ASSY	1	Башмак натяжителя цепи ГРМ
17	WASHER 8.5×1.5×14	1	Шайба
18	BOLT	1	Болт
19	GASKET, TENSIONER	1	Прокладка
20	LIFTER ASSY	1	Натяжитель цепи ГРМ



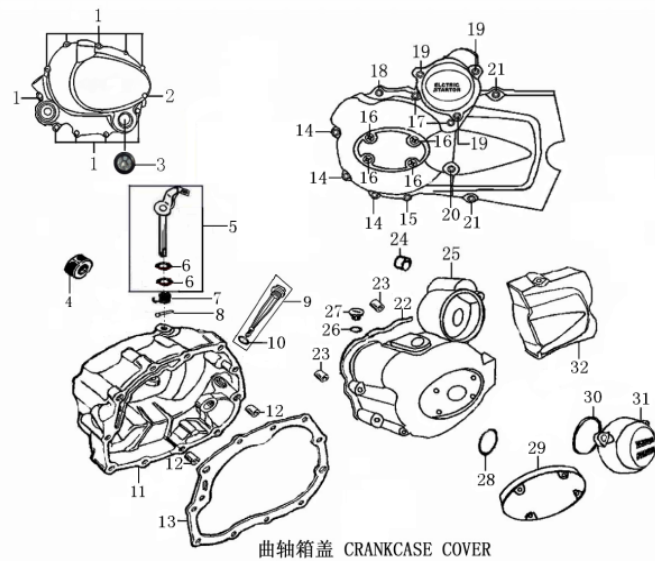
配气机构 VALVE MECHANISM

21	SCREW M6×16	2	Винт
22	O-RING 9×1.8	1	Кольцо уплотнительное 9*1,8
23	BOLT	1	Болт
24	ROCKER SHAFT	2	Ось рокеров
25	GAMP SHAFT COMP	1	Распредвал
26	POSITION PLATE,ROCKER SHAI	1	Фиксатор распредвала
27	SCREW M6×16	1	Винт
28	ASSEMBLY, CHAIN PROTECT PI	1	Ограничитель
29	BOLT M6×16	1	Болт
30			

CRANKCASE COVER

S/N	ENGLISH DESCRIPTION	QTY FOR ONE ENGINE	REMARK
1	BOLT M6×40	10	Болт
2	BOLT M6×50	1	Болт
3	OIL LEVEL SIGHT WINDOW	1	Контрольное окно уровня масла
4	OIL SEAL 16×28×7	1	Сальник 16×28×7
5	CONTROLLING ARM ASSEMBLY	1	Привод сцепления
6	O-RING 8.7×1.9	2	Кольцо уплотнительное 8.7×1.9
7	CLUTCH CONTROLLING ARM SPRING	1	Пружина
8	PIN 3×12	1	Палец
9	OIL RULER ASSY	1	Щуп масляный
10	O-RING 18×3	1	Кольцо уплотнительное 18×3
11	COVER COMP. RIGHT CRANKCASE	1	Крышка картера правая
12	PIN 8×14×6.3	2	Втулка 8×14×6.3
13	GASKET, R.CRANKCASE COVER	1	Прокладка правой крышки картера
14	BOLT M6×25	3	Болт

КРЫШКИ КАРТЕРА



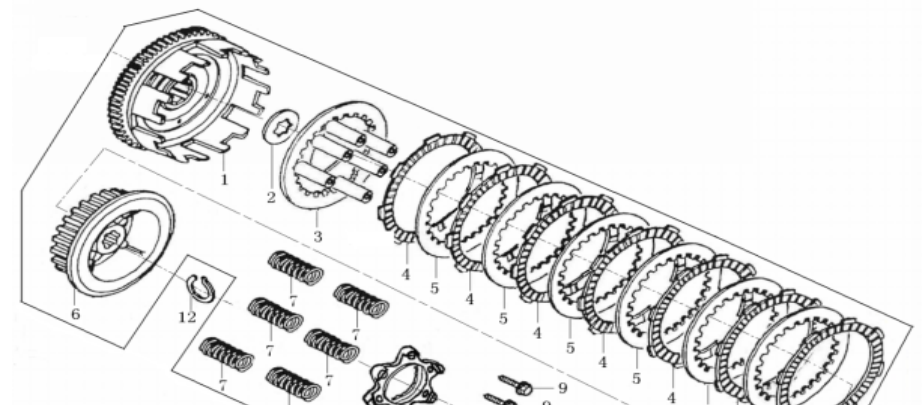
曲轴箱盖 CRANKCASE COVER

15	BOLT M6×35	1	Болт
16	SCREW M6×12	4	Болт
17	BOLT M6×55	2	Болт
18	BOLT M6×35	1	Болт
19	BOLT M6×20	3	Болт
20	BOLT M6×60	1	Болт
21	BOLT M6×28	2	Болт
22	GASKET, L.CRANKCASE COVEI	1	Прокладка левой крышки картера
23	PIN 8×14×6.3	2	Втулка 8×14×6.3
24	BEARING	1	Подшипник
25	FRONT PART, L.CRANKCASE CO	1	Крышка картера левая
26	O-RING 13.2×2.65	1	Кольцо уплотнительное
27	CAP, SMALL VIEW HOLE	1	Заглушка левой крышки картера
28	O-RING 27.4×2.65	1	Кольцо уплотнительное 27.4×2.65
29	DECORATE COVER ,L.CRANKC	1	Декоративная крышка левая
30	O-RING 63×2.65	1	Кольцо уплотнительное
31	COVER,REDUCTION GEAR	1	Крышка шестерни стартера
32	BACK PART, L.CRANKCASE CO	1	Крышка передней звездочки

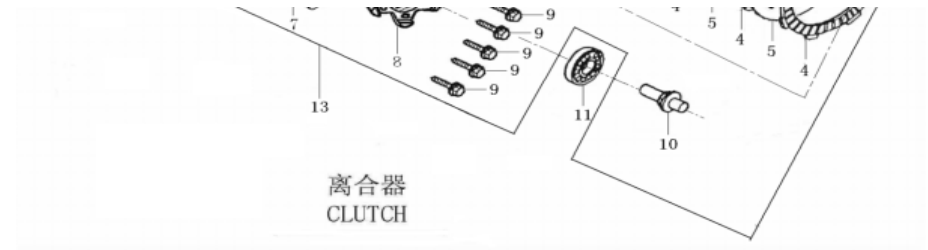
CLUTCH ASSY

S/N	ENGLISH DESCRIPTION	QTY FOR ONE ENGINE	REMARK
1	OUT CASE ASSEMBLY, CLUTCH	1	Корзина сцепления
2	WASHER	1	Шайба
3	PRESSURE PLATE, CLUTCH	1	Опорная плата
4	DRIVE FRICTION DISK	7	Диск сцепления ведущий
5	OUTER FRICTION DISK A	6	Промежуточный диск
6	CENTER SLEEVE, CLUTCH	1	Внутренняя плата

СЦЕПЛЕНИЕ



7	SPRING, CLUTCH	6	Пружина
8	END COVER,CLUTCH	1	Нажимная плата
9	BOLT M5×20	6	Болт
10	PUSHING ROD, CLUTCH	1	Палец
11	BEARING (16003)	1	Подшипник
12	ELASTIC CHECK RING	1	Стопорное кольцо
13	CLUTCH ASSY	1	Сцепление в сборе

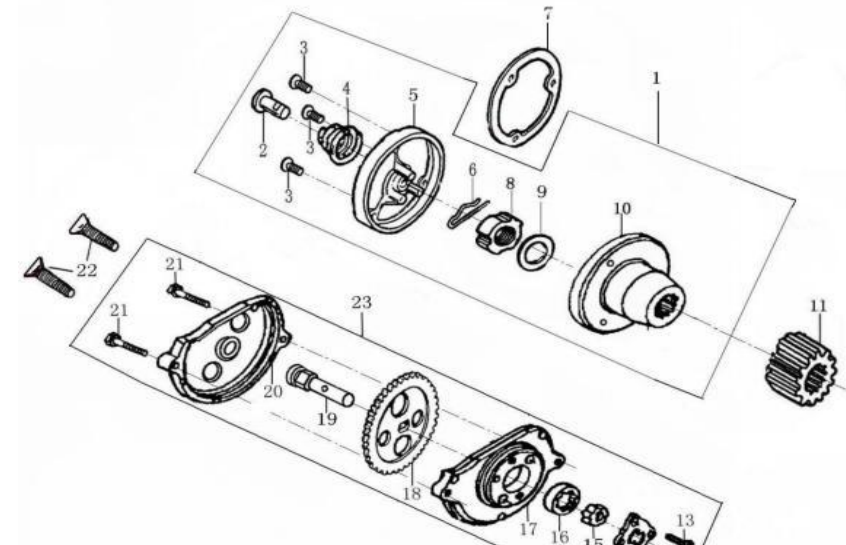


14

OIL PUMP/OIL FILTER

S/N	ENGLISH DESCRIPTION	QTY FOR ONE ENGINE	REMARK
1	OIL FILTER,COMP	1	Центрифуга
2	OIL PIPE	1	Палец маслопроводный
3	SCREW M5×12	3	Винт
4	SPRING, OIL PIPE	1	Пружина
5	OIL FILTER COVER	1	Крышка центрифуги
6	OPEN PIN	1	Фиксатор
7	GASKET, OIL FILTER	1	Прокладка центрифуги
8	NUT	1	Гайка
9	DISH WASHER, CLUTCH	1	Стопорная шайба
10	ROTOR ASS. OF OIL FILTER	1	Корпус центрифуги
11	PRIMARY DRIVE GEAR	1	Ведущая шестерня
12	O-RING 9.4×2.4	2	Кольцо уплотнительное
13	SCREW M4×10	2	Винт
14	OIL PUMP COVER	1	Крышка масляного насоса
15	INNER ROTOR, OIL PUMP	1	Внутренний ротор
16	OUTER ROTOR, OIL PUMP	1	Наружный ротор

МАСЛЯНЫЙ НАСОС



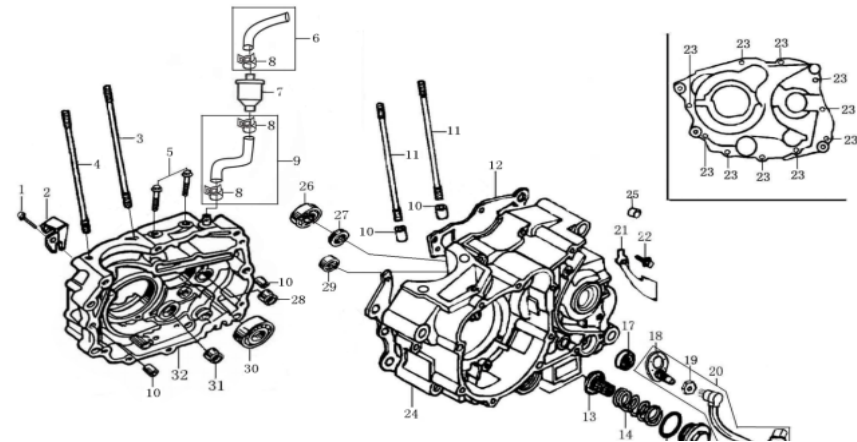
17	OIL PUMP BODY	1	Корпус масляного насоса
18	GEAR,OIL PUMP	1	Шестерня масляного насоса
19	SHAFT,OIL PUMP	1	Вал масляного насоса
20	OIL PUMP GEAR COVER	1	Крышка шестерни масляного насоса
21	BOLT M5×20	2	Болт
22	SCREW M6×30	2	Винт
23	OIL PUMP ASSY	1	Масляный насос в сборе
24	INSULATING GASKET CAF	1	Прокладка
25			



CRANKCASE

КАРТЕР

S/N	ENGLISH DESCRIPTION	QTY FOR ONE ENGINE	REMARK
1	BOLT M6×55	1	Болт
2	HOLDER,CLUTCH CABLE	1	Держатель тросика сцепления
3	CYLINDER STUD BOLT B	1	Шпилька цилиндра
4	CYLINDER STUD BOLT B	1	Шпилька цилиндра
5	BOLT M6×28	2	Болт
6	BREATH TUBE	1	Шланг
7	OIL AIR FILTER	1	Фильтр
8	CLAMP	3	Зажим
9	BREATH TUBE	1	Шланг
10	PIN 10×14	4	Втулка
11	CYLINDER STUD BOLT A	2	Шпилька цилиндра
12	GASKET,CRANKCASE	1	Прокладка картера
13	STRAINER,OIL FILTER	1	Сетка маслофильтра
14	SPRING,OIL FILTER STRAINER	1	Пружина
15	O-RING 35×3	1	Кольцо уплотнительное



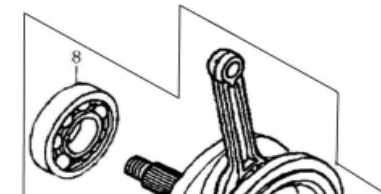
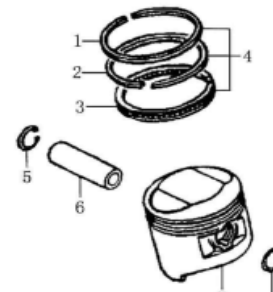
16	COVER, VALVE CHAMBER	1	Прокладка масляного фильтра
17	OIL-SEAL 14×28×7	1	Сальник 14×28×7
18	GEARSHIFT SWITCH PLATE	1	Плата датчика включенной передачи
19	NUT	1	Гайка
20	GEARSHIFT SWITCH LAMP	1	Датчик включенной передачи
21	POSITION PLATE	1	Фиксатор проводки
22	BOLT M6×12	1	Болт
23	BOLT M6×50	10	Болт
24	LEFT CRANKCASE BLOCK	1	Картер левый
25	BEARING	1	Подшипник
26	BEARING (6204)	1	Подшипник
27	OIL SEAL 20×34×7	1	Сальник 20×34×7
28	BEARING (NK152312)	1	Подшипник
29	BEARING (TM6202Z)	1	Подшипник
30	BEARING (6006)	1	Подшипник
31	BEARING (HK212810)	1	Подшипник
32	RIGHT CRANKCASE BLOCK	1	Картер правый
33			



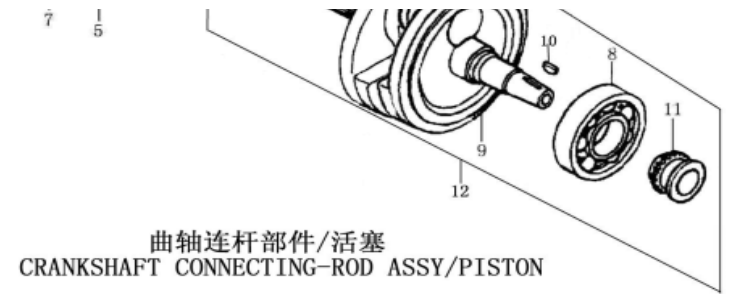
曲轴箱 CRANKCASE

CRANKSHAFT CONNECTING-ROD ASSY/PISTON КОЛЕНВАЛ / ПОРШЕНЬ

S/N	ENGLISH DESCRIPTION	QTY FOR ONE ENGINE	REMARK
1	PISTON RING 1	1	Верхнее кольцо 65,5
2	PISTON RING 2	1	Нижнее кольцо 65,5
3	OIL RING ASSY	1	Маслосъемное кольцо 65,5
4	PISTON RING COMP	1	Кольца поршневые (к-т) 65,5
5	CHECK RING, PISTON PIN	2	Палец поршня
6	PIN PISTON	1	Стопорное кольцо



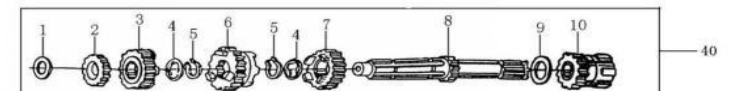
7	PISTON	1	Поршень 65,5
8	BEARING (TM-SC06B42)	2	Подшипник TM-SC06B42 коленвала
9	CONNECTING ROD COMP 3	1	Коленвал CB250
10	SEMICIRCULAR KEY	1	Шпилька
11	HUB DUMP CHAIN SPROCKET	1	Звездочка привода распредвала
12	CRANKSHAFT CONNECTING-ROD	1	Коленвал CB250 в сборе
13			



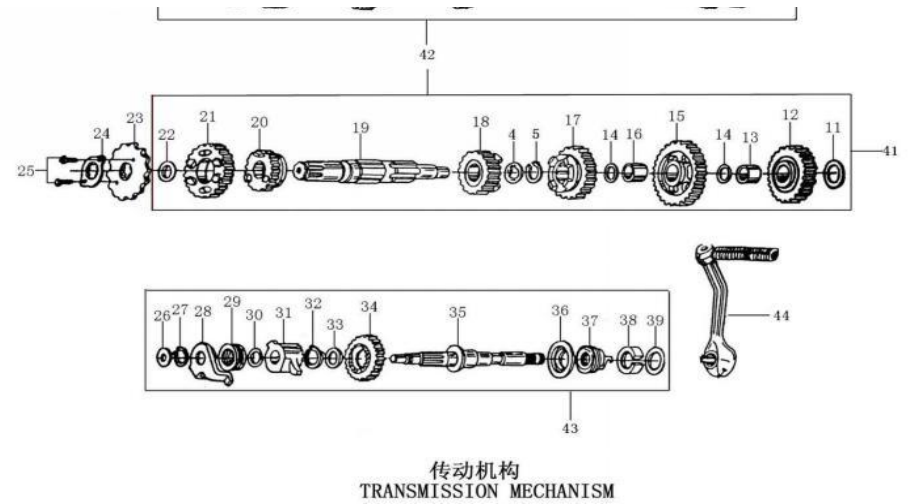
TRANSMISSION MECHANISM

ТРАНСМИССИЯ

S/N	ENGLISH DESCRIPTION	QTY FOR ONE ENGINE	REMARK
1	WASHER 15.2×1×25	1	Шайба
2	GEAR M-2	1	Шестерня
3	GEAR M-5	1	Шестерня
4	WASHER	3	Шайба
5	CIRCLI φ18.5×1.2×φ22.1	3	Стопорное кольцо
6	GEAR M-4	1	Шестерня
7	GEAR M-3	1	Шестерня
8	TRANSMISSION MAIN SHAFT	1	Первичный вал
9	WASHER 20.2×0.5×27	1	Шайба
10	FINAL SHAFT	1	Вал шестерня
11	WASHER 15.2×1×30	1	Шайба
12	GEAR	1	Шестерня
13	GEAR BUSH	1	Втулка
14	WASHER 16.5×0.5×24	2	Шайба
15	GEAR C-1	1	Шестерня
16	GEAR BUSH	1	Втулка
17	GEAR C-3	1	Шестерня



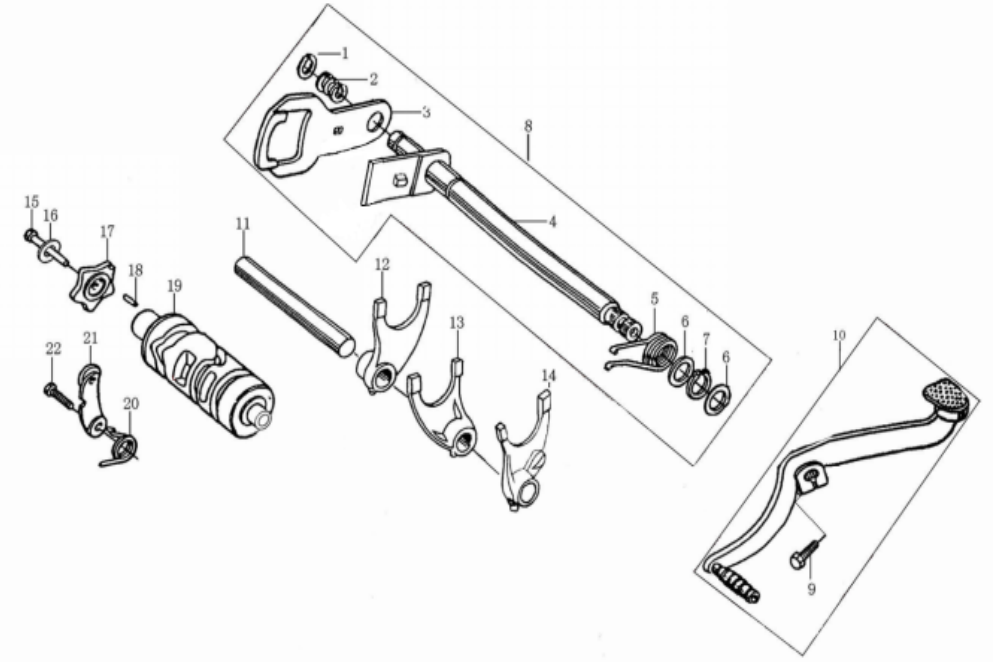
18	GEAR C-4	1	Шестерня
19	TRANSMISSION COUNTER SHAFT	1	Вторичный вал
20	GEAR C-5	1	Шестерня
21	GEAR C-2	1	Шестерня
22	WASHER 20×1×27	1	Шайба
23	DRIVE SPROCKET	1	Ведущая звездочка
24	FIXING PLATE,DRIVE SPROCKET	1	Фиксатор
25	BOLT M6×10	2	Болт
26	WASHER 12.1×1×18	1	Шайба
27	CIRCLIP 16	1	Стопорное кольцо
28	GUIDE PLATE ASS.	1	Кронштейн
29	SPRING, KICK STARTING RATCHET	1	Пружина
30	WASHER 16.1×1×24	1	Шайба
31	STARTING RATCHET	1	Храповик
32	CIRCLIP φ18.5×1.2×φ22.4	1	Стопорное кольцо
33	WASHER 20×0.5×27	1	Шайба
34	GEAR, KICK STARTER	1	Шестерня-храповик
35	PIVOT, KICK STARTING SHAFT	1	Вал кик-стартера
36	SEAT, SPRING, KICK STARTING	1	Опорная шайба
37	RETURN SPRING, KICK STARTING	1	Пружина кик-стартера
38	COLLAPSIBLE	1	Фиксатор пружины
39	WASHER 16.1×1×30	1	Шайба
40	MAIN SHAFT, TRANSMISSION	1	Первичный вал в сборе
41	COUNTERSHAFT TRANSMISSION	1	Вторичный вал в сборе
42	TRANSMISSION MAIN, COUNTERSHAFT	1	Трансмиссия в сборе
43	KICK STARTING SHAFT ASSEMBLY	1	Вал кик-стартера в сборе
44	START-UP BAR COMPONENT	1	Лапка кик-стартера



GEARSHIFT MECHANISM

МЕХАНИЗМ ПЕРЕКЛЮЧЕНИЯ ПЕРЕДАЧ

S/N	ENGLISH DESCRIPTION	QTY FOR ONE	REMARK
1	CIRCLIP 12	1	Стопорное кольцо
2	SPRING, GEARSHIFT PLATE	1	Пружина
3	GEARSHIFT PLATE	1	Плата
4	GEARSHIFT SHAFT COMP	1	Вал
5	RETURN SPRING	1	Пружина
6	WASHER 14×0.5×20	2	Шайба
7	CIRCLIP 14	1	Стопорное кольцо
8	GEARSHIFT LEVER COMP	1	Вал лапки КПП
9	BOLT M6×20	1	Болт
10	GEARSHIFT SHAFT	1	Лапка переключения передач
11	SHAFT , GEARSHIFT FORK	1	Ось вилок КПП
12	RIGHT FORK, COUNTERSHAFT	1	Вилка переключения передач
13	CENTER FORK, MAINSHAFT	1	Вилка переключения передач
14	LEFT FORK, COUNTERSHAFT	1	Вилка переключения передач
15	BOLT	1	Болт
16	WASHER φ6	1	Шайба
17	STOPPING PLATE	1	Звездочка-фиксатор
18	PIN 4×10	1	Палец
19	GEARSHIFT DRUM	1	Вал выбора передач
20	SPRING ,LOCATING PLATE	1	Пружина
21	LOCATING PLATE ASSY	1	Ролик-фиксатор
22	BOLT M6×20	1	Болт
23			



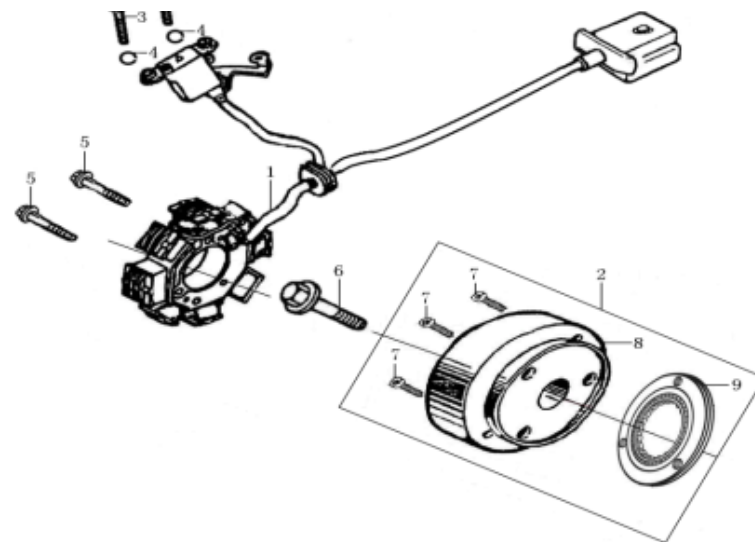
变速机构 GEARSHIFT MECHANISM

MAGNETO COMP

МАГНЕТТО



S/N	ENGLISH DESCRIPTION	QTY FOR ONE ENGINE	REMARK
1	STATOR ASSY,MAGNETO	1	Магнетто, генератор CB250
2	ROTOR ASSY,MAGNETO	1	Ротор с приводом стартера CB250
3	SCREW M4×10	2	Винт
4	WASHER φ4	2	Шайба
5	BOLT M6×28	2	Болт
6	BOLT M10×36	1	Болт
7	BOLT M8×18	3	Болт
8	ROTOR ASSY,MAGNETO	1	Ротор, магнит генератора CB250
9	ASSEMBLY, OVERRUNNING CL	1	Привод стартера CB250
10			

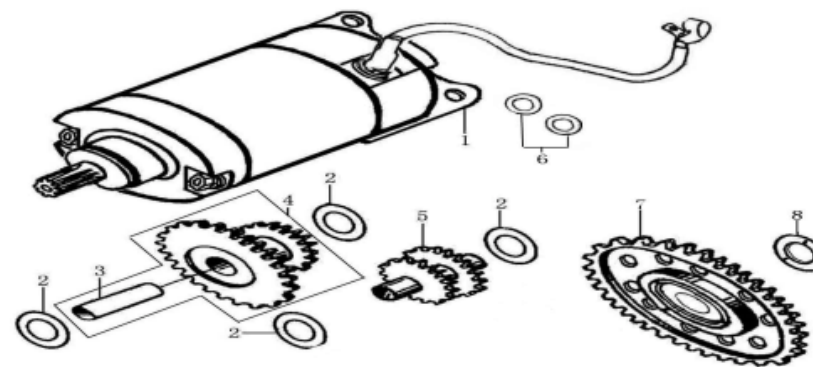


磁电机总成 MAGNETO COMP

ELECTRIC STARTING MECHANISM

ЭЛЕКТРОСТАРТЕР

S/N	ENGLISH DESCRIPTION	QTY FOR ONE ENGINE	REMARK
1	STARTING MOTOR ASSY	1	Мотор электростартера CB250
2	WASHER 10.5×0.5×18	4	Шайба
3	SHAFT,REDUCTION	1	Ось шестерни
4	GEAR, REDUCTION, 1	1	Промежуточные шестерни стартера
5	GEAR, REDUCTION, 2	1	Промежуточные шестерни стартера
6	WASHER	2	Шайба
7	PLATE GEAR ASSY	1	Шестерня стартера
8	WASHER 22×3.5×34	1	Шайба
9			

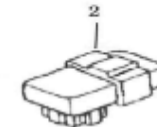


电启动机构
ELECTRIC STARTING MECHANISM

ELECTRIC

ЭЛЕКТРООБОРУДОВАНИЕ ДВИГАТЕЛЯ

S/N	ENGLISH DESCRIPTION	QTY FOR ONE ENGINE	REMARK
1	IGNITION COIL	1	Катушка зажигания



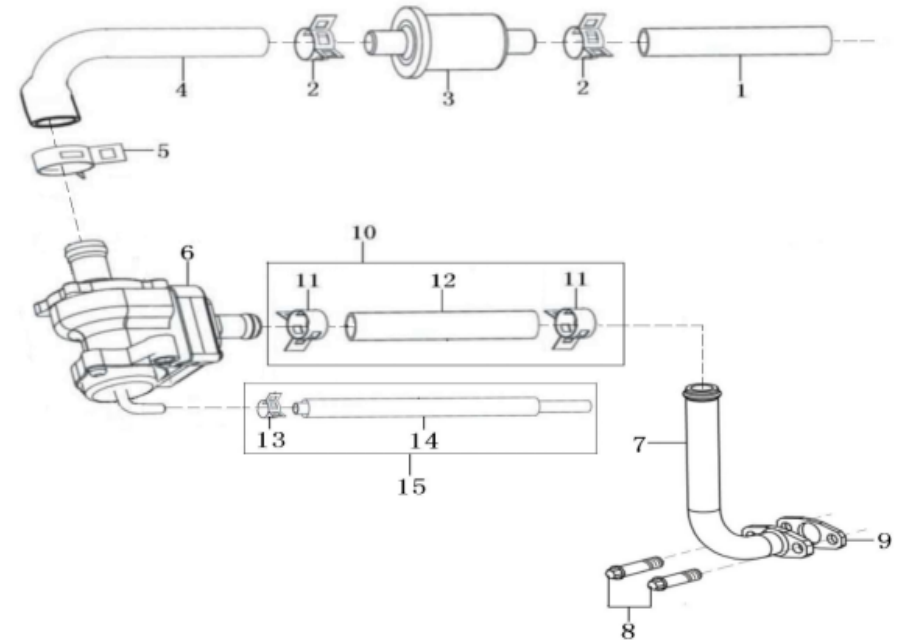
2	C.D.I	1	CDI, коммутатор
3	RECTIFIER	1	Регулятор напряжения
4	RELAY	1	Реле стартера
5			
6			



电器件 ELECTRIC

EXHAUST GAS SYSTEM СИСТЕМА РЕЦИРКУЛЯЦИИ ОТРАБОТАННЫХ ГАЗОВ

S/N	ENGLISH DESCRIPTION	QTY FOR ONE ENGINE	REMARK
1	CONNECTING PIPE	1	Шланг
2	HOOP	2	Хомут
3	SEC.AIR BOX VALVE	1	Обратный клапан
4	CONNECTING PIPE	1	Шланг
5	HOOP	1	Хомут
6	GAS PUMP	1	Перепускной клапан
7	IRON PIPE	1	Металлическая трубка
8	BOLT M6×16	2	Болт
9	PAPER GASKET	1	Прокладка
10	RUBBER PIPE	1	Шланг
11	CLAMP	2	Хомут
12	RUBBER PIPE	1	Шланг
13	CLAMP	1	Хомут
14	RUBBER PIPE	1	Шланг
15	RUBBER PIPE	1	Шланг



废气再循环系统
EXHAUST GAS RECIRCULATION SYSTEM