



КАТАЛОГ ЗАПЧАСТЕЙ К ДВИГАТЕЛЮ M152FHM
(4-такта, объем 110см.куб.)

PEGAS 110 (QM110-3C)

www.SkyBike.com.ua

Внимание!

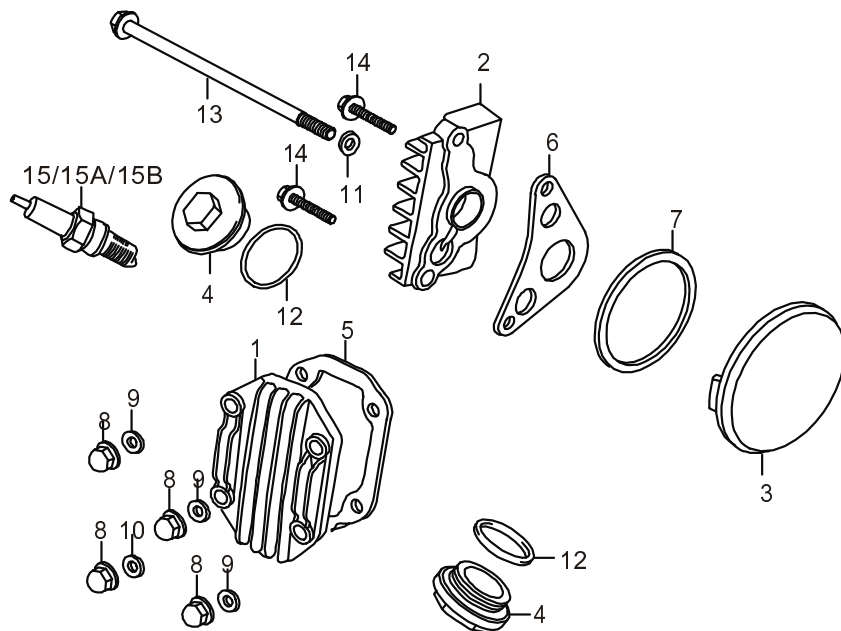
Для заказа запчастей необходимо в каталоге найти страницу с изображением интересующей вас детали. В левом верхнем углу написан код рисунка. Номер детали указан возле изображения детали. Например для заказа прокладки глушителя, для модели FORTUNE 50, вы пишете в заявке – "FIG.13 – 8 Прокладка глушителя" (или название на английском из каталога) и необходимое количество. Если группа деталей объединена скобкой, это значит, что детали продаются в комплекте.

После того, как вы определились с выбором детали, вы можете сделать заказ, уточнить наличие на складе, цену, позвонив по телефонам указанным на [сайте](#) или отправьте запрос на наш e-mail: repair@skybike.com.ua

КАТАЛОГ ЗАПЧАСТЕЙ

№.	НАЗВАНИЕ	
FIG.E1	КРЫШКИ ГОЛОВКИ.....	1
FIG.E2	ГОЛОВКА ЦИЛИНДРА.....	2
FIG.E3	РАСПРЕДВАЛ / КЛАПАНА.....	4
FIG.E4	ЦЕПЬ РАСПРЕДВАЛА	5
FIG.E5	ЦИЛИНДР.....	6
FIG.E6	КРЫШКА КАРТЕРА ПРАВАЯ.....	7
FIG.E7	СЦЕПЛЕНИЕ ПОЛУ-АВТОМАТ.....	9
FIG.E8	СЦЕПЛЕНИЕ	11
FIG.E8A	СЦЕПЛЕНИЕ	12
FIG.E9	МАСЛО НАСОС.....	14
FIG.E10	КРЫШКА КАРТЕРА ЛЕВАЯ.....	15
FIG.E11	МАГНЕТТО.....	16
FIG.E12	ПРИВОД СТАРТЕРА.....	17
FIG.E13	МОТОР СТАРТЕРА.....	18
FIG.E14	КАРТЕР.....	19
FIG.E15	КОЛЕНВАЛ / ПОРШЕНЬ.....	20
FIG.E16	ТРАНСМИССИЯ.....	21
FIG.E17	МЕХАНИЗМ ВЫБОРА ПЕРЕДАЧ.....	23
FIG.E18	КИК СТАРТЕР.....	25
FIG.E19	КАРБЮРАТОР.....	26

FIG.E1



M152FMH

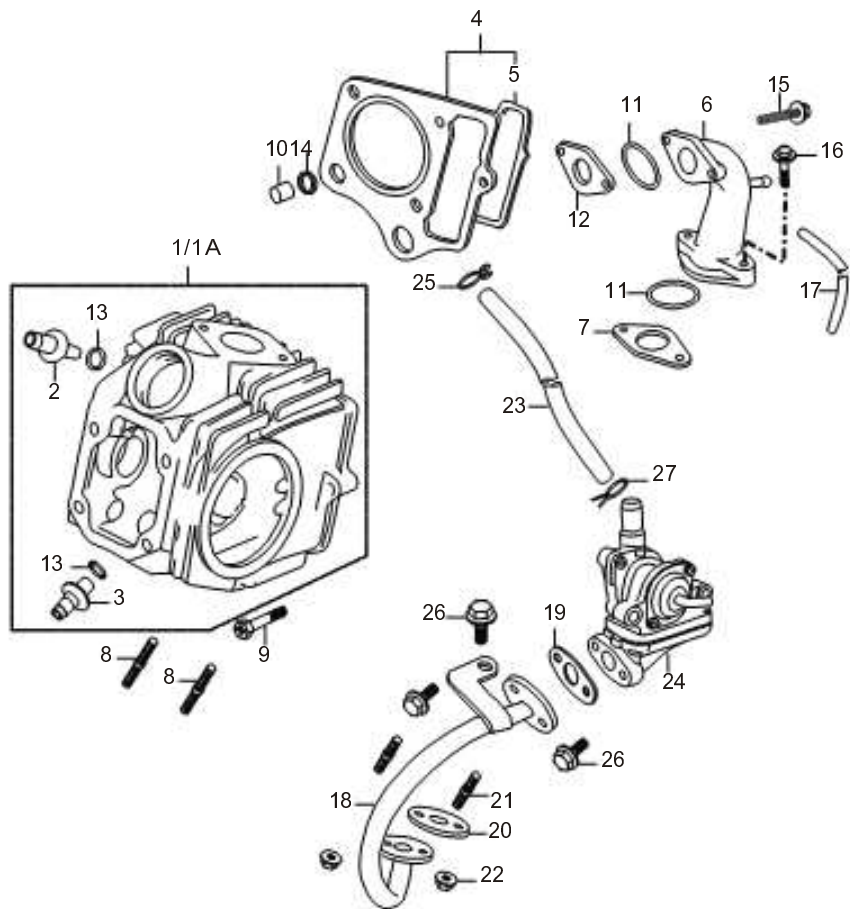
E1

FIG.E1

КРЫШКИ ГОЛОВКИ

Ref.No.	Part No.	Description	Q'ty	Remarks
1	M150FMG-2.02-20	Cylinder head	1	
2	M150FMG-2.02-8-00	Right cover cylinder head	1	
3	M150FMG-2.02-22A	Left cover cylinder head	1	
4	M150FMG-2.02-15	Cap, tappet adjusting	2	
5	M150FMG-2.02-21	Gasket, cylinder head cover	1	
6	M150FMG-2.02-19	Gasket	1	
7	M150FMG-2.02-23	Gasket	1	
8	M150FMG-2.02-45	Cap nut 6	4	
9	M150FMG-2.02-36	Washer 6	2	
10	M150FMG-2.02-37	Washer 6	2	
11	K157FMI01.4-00	Washer 6	1	
12	K157FMI02-19	O- Ring d29.5x3	2	
13	M150FMG-2.02-17	Flange bolt M6x110	1	
14	GB5787-86	Flange bolt M6x20	2	
15	A7RTC	Plug (C6HSA) (NGK)	1	
15A		Plug (C7HSA) (NGK)	1	
15B		Plug (C8HSA) (NGK)	1	

FIG.E2



M152FMH

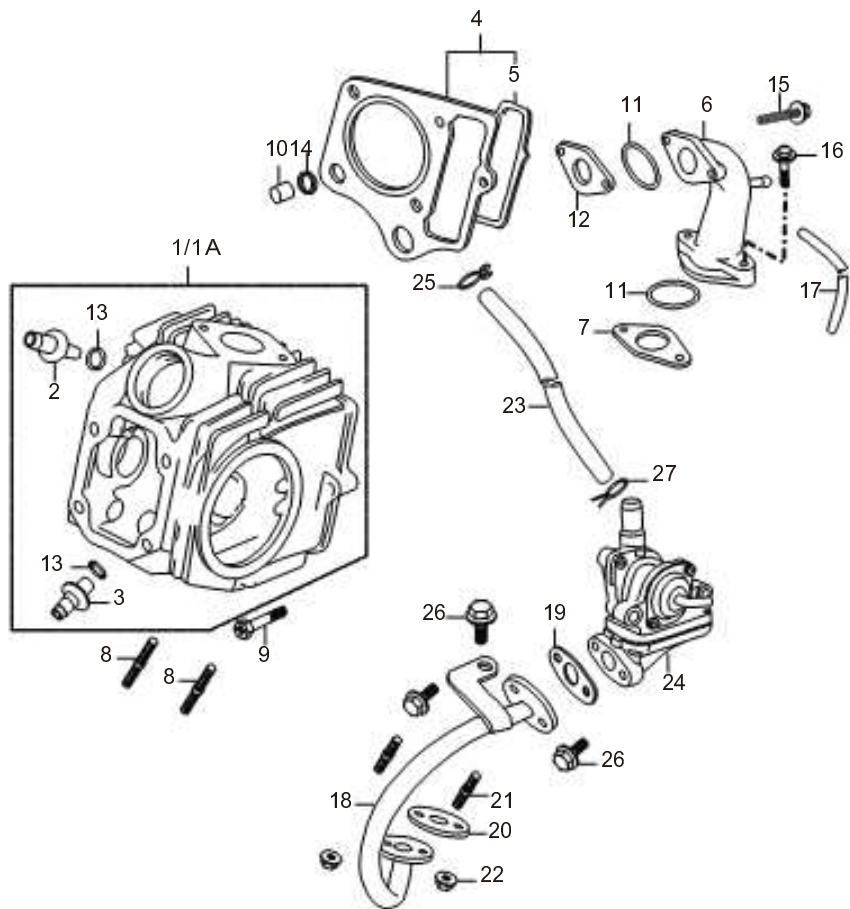
E2

FIG.E2

ГОЛОВКА ЦИЛИНДРА

Ref.No.	Part No.	Description	Q'ty	Remarks
1	M152FMH02.1-00	Cylinder head comp	1	
1A		Cylinder head comp	1	
2		Guide inlet valve	1	
3		Guide exhaust valve	1	
4	M152FMH02.2-00	Gasket set	1	
5		Seal ring	1	
6	M150FMG-2.02.12-00	Inlet pipe assy	1	
7	M150FMG-2.02-06	Gasket	1	
8	M150FMG-2.02-44	Stud M6x35	2	
9	M150FMG-2.02-09	Stud M6x23	1	
10	M150FMG-2.02-27	Dowel pin 9.5	1	
11	M150FMG-2.02-41	O-Ring	1	
12	M150FMG-2.02-40	Gasket	1	
13		O-Ring d9x1.6	2	
14	M150FMG-2.02-26	O-ring d9x1.5x11.7	1	
15	GB5787-86	Stud M6x28	2	
16	GB5787-86	Stud M6x25	2	
17		Hose	1	
18	11870QKX3230	Hose assy	1	
19	09169Q090001	Gasket	1	

FIG.E2



E2

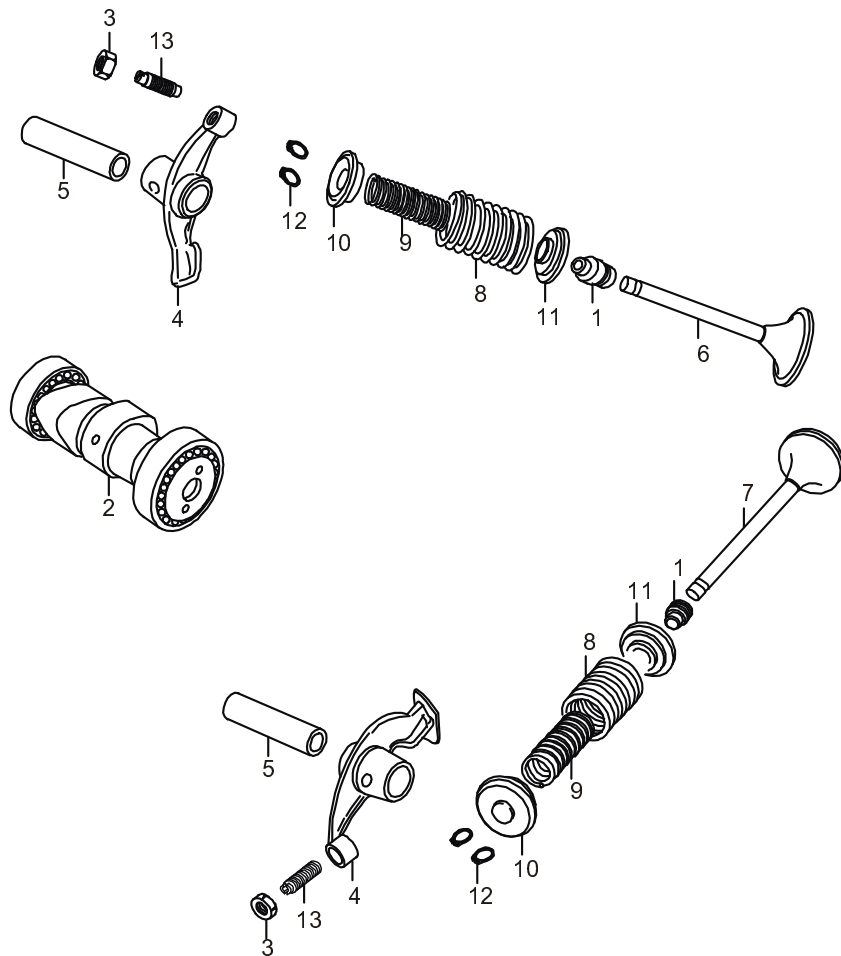
FIG.E2

ГОЛОВКА ЦИЛИНДРА

Ref.No.	Part No.	Description	Q'ty	Remarks
20	14841QLKK030	gasket	1	
21	030A4Q060124	Stud M6x16	2	
22	09159Q060001	Nut M6	2	
23		Hose	1	
24		Valve, secondly supplement air	1	
25	09401Q163004	Clip II	1	
26	02304Q060162	Bolt M6x16	3	
27		Clip	1	

M152FMH

FIG.E3



M152FMH

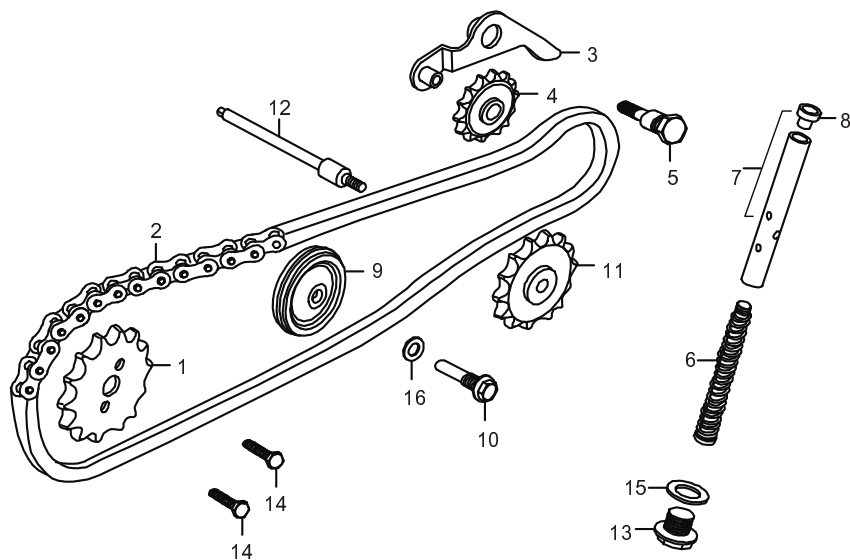
E3

FIG.E3

РАСПРЕДВАЛ / КЛАПАНА

Ref.No.	Part No.	Description	Q'ty	Remarks
1	139QMB02.6-00	Seal, valve stem	2	
2	M150FMG-2.02.3-00	Camshaft comp	1	
3		Adjusting nut	2	
4	M150FMG-2.02.2-00	Rocker arm	2	
5	M150FMG-2.02-32	Rocker Shaft	2	
6	M150FMG-2.02-04	Valve in.	1	
7	M150FMG-2.02-10	Valve ex.	1	
8	M150FMG-2.02-12	Outer spring valve	2	
9	M150FMG-2.02-11	Inner spring valve	2	
10	139QMB02-18	Spring seat	2	
11	139QMB02-17	Outer spring seat	2	
12	139QMB02-19	Valve cotter	4	
13		Adjusting screw	2	

FIG.E4



E4

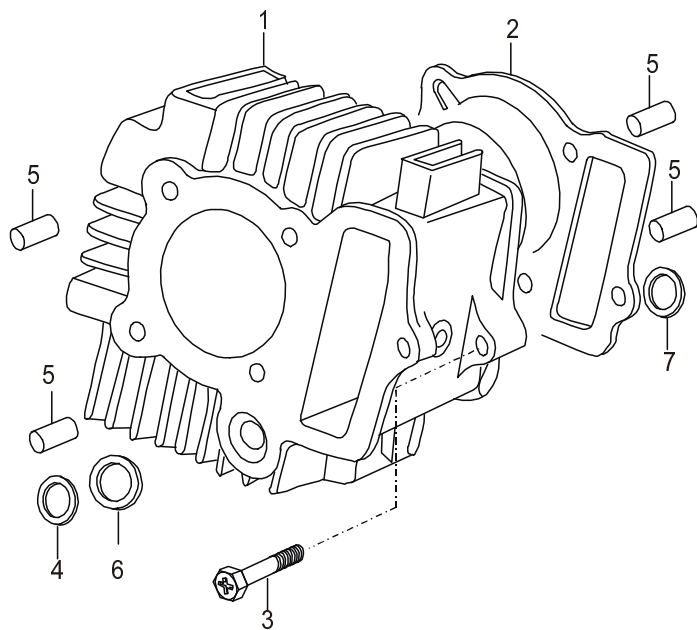
FIG.E4

ЦЕПЬ РАСПРЕДВАЛА

Ref.No.	Part No.	Description	Q'ty	Remarks
1	M150FMG-2.02-24	Sprocket (28T)	1	
2	M150FMG-2.02.5-00	Timing chain	1	
3	M150FMG-2.02.10-00	Adjusting arm	1	
4	M150FMG-2.02.4-00	Roller tensisor	1	
5	M150FMG-2.02-30	Pin	1	
6	M150FMG-2.02-33	Spring	1	
7	M150FMG-2.02.6-00	Piston, tensisor	1	
8	M150FMG-2.02-31	Head, piston	1	
9	M150FMG-2.02.11-00	Guide roller	1	
10	M150FMG-2.02-28	Pin, guide roller	1	
11	M150FMG-2.12.2-00	Sprocket, oil pump drive	1	
12	M150FMG-2.12-03	Hub shaft	1	
13	M150FMG-2.02-34	Sealing plug M14x1.5	1	
14	M150FMG-2.02-25	Bolt M5x12	3	
15	M150FMG-2.02-35	Washer 14	1	
16	M150FMG-2.02-29	Washer 8	1	

M152FMH

FIG.E5



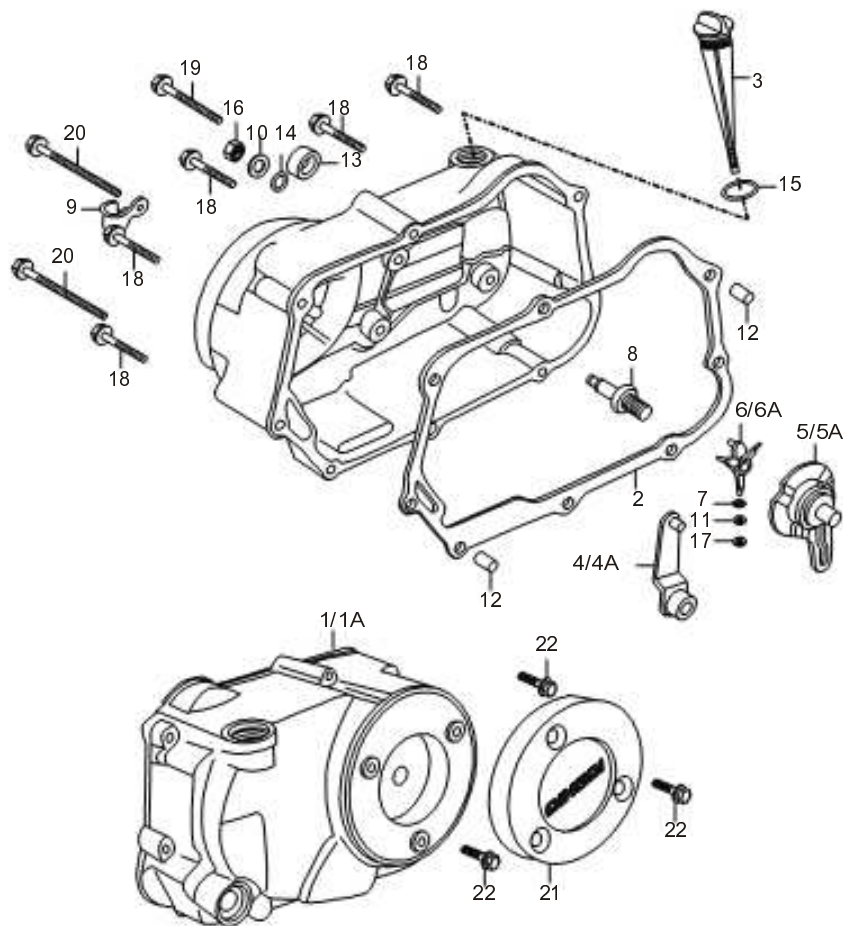
E5
FIG.E5

ЦИЛИНДР

Ref.No.	Part No.	Description	Q'ty	Remarks
1	M152FMH-2.02-02	Cylinder	1	
2	M152FMH-2.02-01	Gasket, cylinder	1	
3	M150FMG-2.02-09	Bolt M6x23	1	
4	M150FMG-2.02-43	O-Ring	1	
5	139QMB01-14	Dowel pin 8x14	2	
6	M150FMG-2.02-42	O-Ring d14.5x2.5x18.5	1	
7	M150FMG-2.02-26	O-Ring d11.5x12x2.5	1	
8	M150FMG-2.01-35	Dowel pin 8x12	2	

M152FMH

FIG.E6



M152FMH

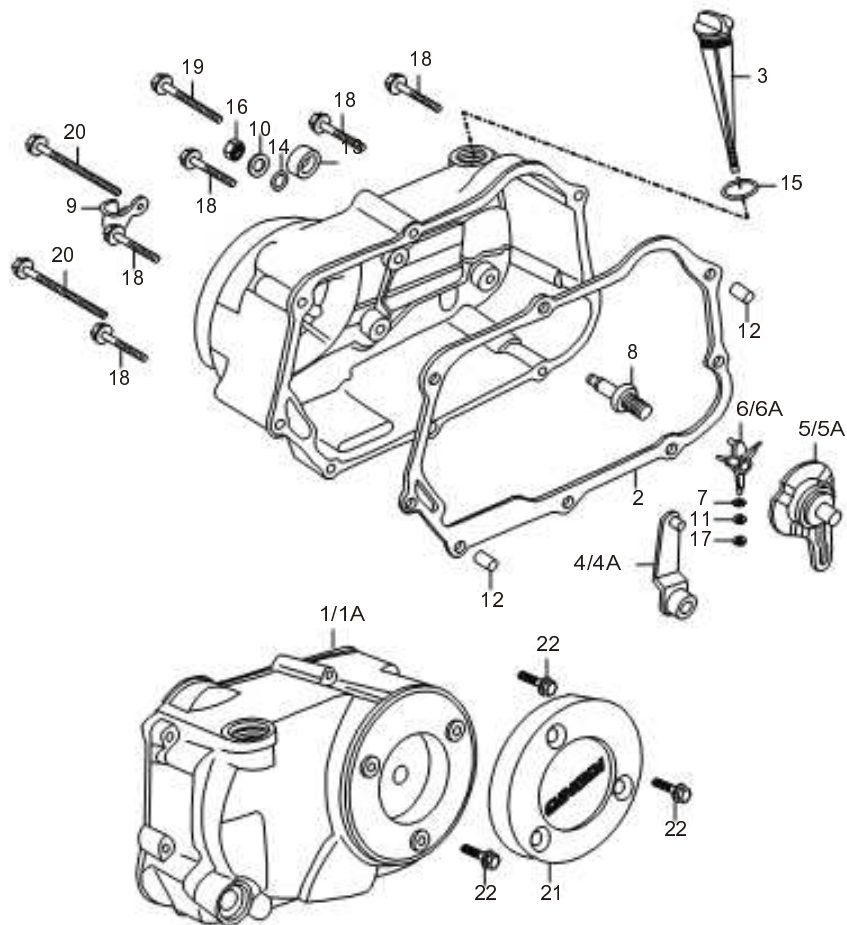
E6

FIG.E6

КРЫШКА КАРТЕРА ПРАВАЯ

Ref.No.	Part No.	Description	Q'ty	Remarks
1	M150FMG-2.01.3-00A	Cover comp, R.H crankcase	1	
1A	M150FMG-2.01.3-00B	Cover comp, R.H crankcase	1	
2	M150FMG-2.01-22	Gasket, cover RH	1	
3	M150FMG-2.01-3A	Oil gauge	1	
4	M150FMG-2.10.6-00	Clutch lever	1	
4A	M150FMG-3.10.6-00	Clutch lever	1	
5	M150FMG-2.05.4-00	Cam, clutch	1	
5A	M150FMG-3.05.8-00	Cam, clutch	1	
6	M150FMG-3.05.7-00	Tappet	1	
6A	M150FMG-3.05.7-00A	Tappet	1	
7		Roller	3	
8	M150FMG-2.05-08	Adjust screw	1	
9	M150FMG-2.01-23	Clamp	1	
10	GB97.1-85	Washer 8	1	
11		Washer	3	
12	M150FMG-2.01-35	Dowel pin 8x12	2	
13	M150FMG-2.01-24	Oil seal 13.8x24x5	1	
14	T151QMI12-11	O-ring d8x1.6	1	
15	M150FMG-2.01-32	O-ring d18x3	1	
16	GB6170-85	Nut M8	1	

FIG.E6



E6

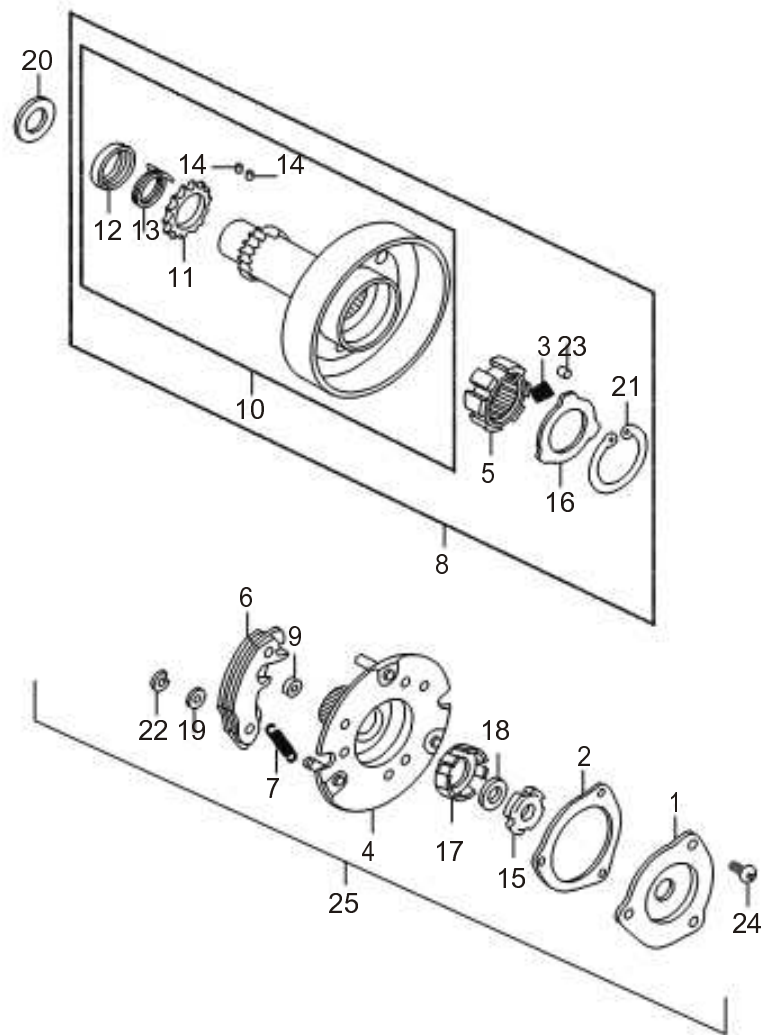
FIG.E6

КРЫШКА КАРТЕРА ПРАВАЯ

Ref.No.	Part No.	Description	Q'ty	Remarks
17		Circlip 3	3	
18	GB5787-86	Bolt M6x40	5	
19	GB5787-86	Bolt M6x65	1	
20	GB5787-86	Bolt M6x80	2	
21	M150FMG-3.01.3.1-00A	Emblem cover, RH	1	
22	GB5787-86	Bolt M6x16	3	

M152FMH

FIG.E7



M152FMH

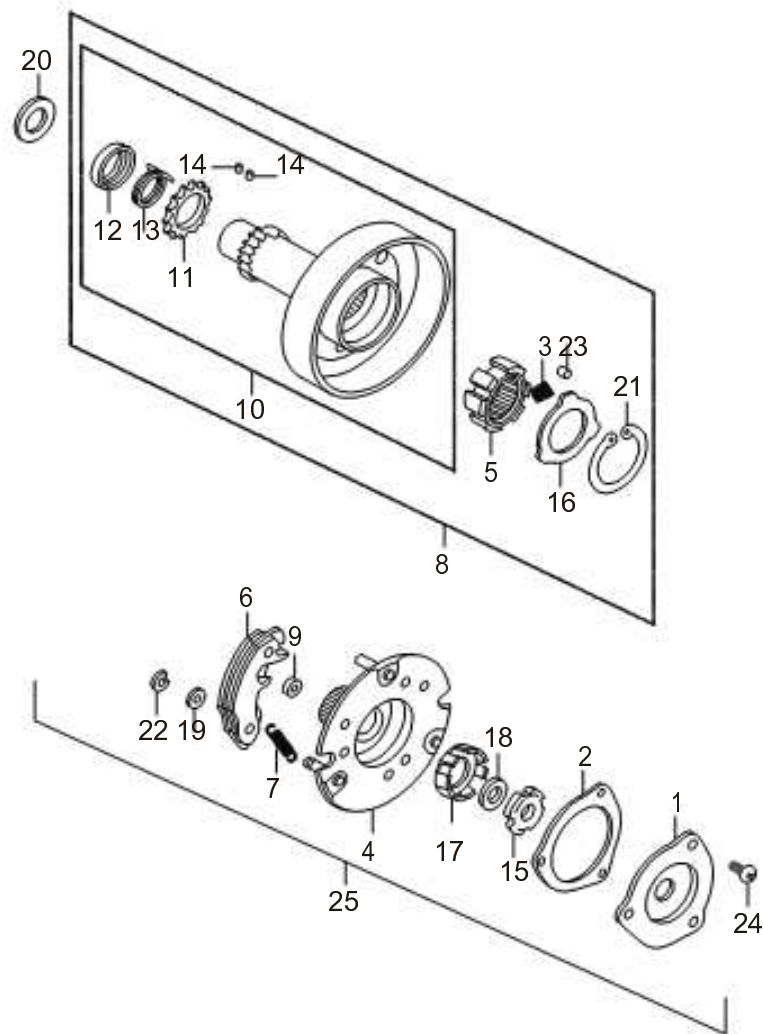
E7

FIG.E7

СЦЕПЛЕНИЕ ПОЛУ АВТОМАТ

Ref.No.	Part No.	Description	Q'ty	Remarks
1		Clutch cover	1	
2		Gasket	1	
3		Spring	6	
4		Driving plate	1	
5		Clutch inner set	1	
6		Shoes, clutch	3	
7		Spring	3	
8		Clutch hub	1	
		Damper	3	
9		Primary gear, drive	1	
10		Gear (17T)	1	
11		Spacer	1	
12		Spring	1	
13		Pin	2	
14		Nut BM14 x 1	1	
15		Washer 30	1	
16		Lock washer	1	
17		Lock washer B	1	
18				

FIG.E7



M152FMH

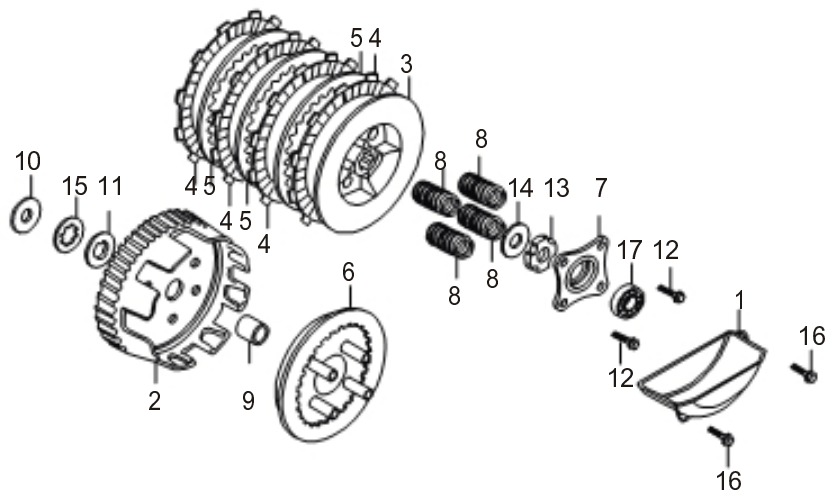
E7

FIG.E7

СЦЕПЛЕНИЕ ПОЛУ АВТОМАТ

Ref.No.	Part No.	Description	Q'ty	Remarks
19		Thrust washer 8	3	
20		Thrust washer 19	1	
21		Circlip 45	1	
22		Circlip 7	3	
23		Roller 5x8	6	
24	GB818-85	Screw M5x6	3	
25	M150FMG-3.05-00	Primary clutch assy	1	

FIG.E8



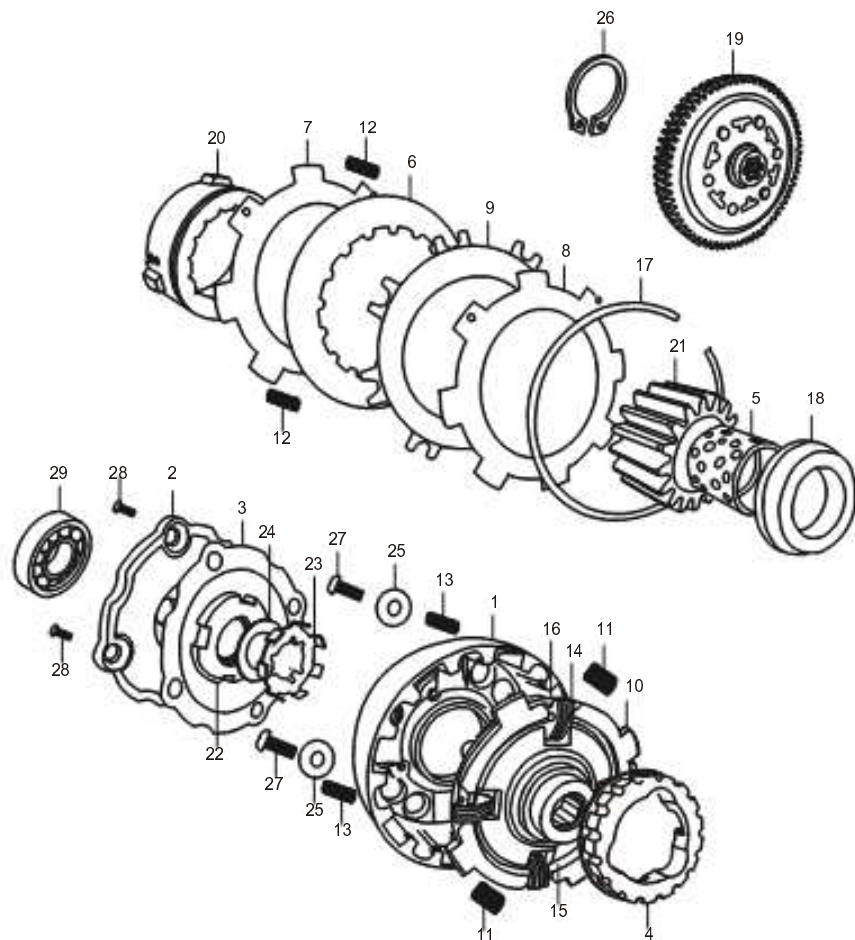
E8
FIG.E8

СЦЕПЛЕНИЕ

Ref.No.	Part No.	Description	Q'ty	Remarks
1		Cover, defending oil	1	
2		Driven gear comp	1	
3		Driven gear comp	1	
4		Friction plate, drive	4	
5		Friction plate, driven	3	
6		Pressure plate, clutch	1	
7		Lifter plate, clutch	1	
8		Clutch spring	4	
9		Clutch bush	1	
10		Spacer	1	
11		Washer, thrust	1	
12	GB5783-86	Bolt M6x22	4	
13		Lock nut M14	1	
14		Locking washer B, clutch	1	
15		Washer, spline B17	1	
16	GB5787-86	Bolt M6x20	2	
17	GB276-64	Bearing 6000	1	

M152FMH

FIG.E8A



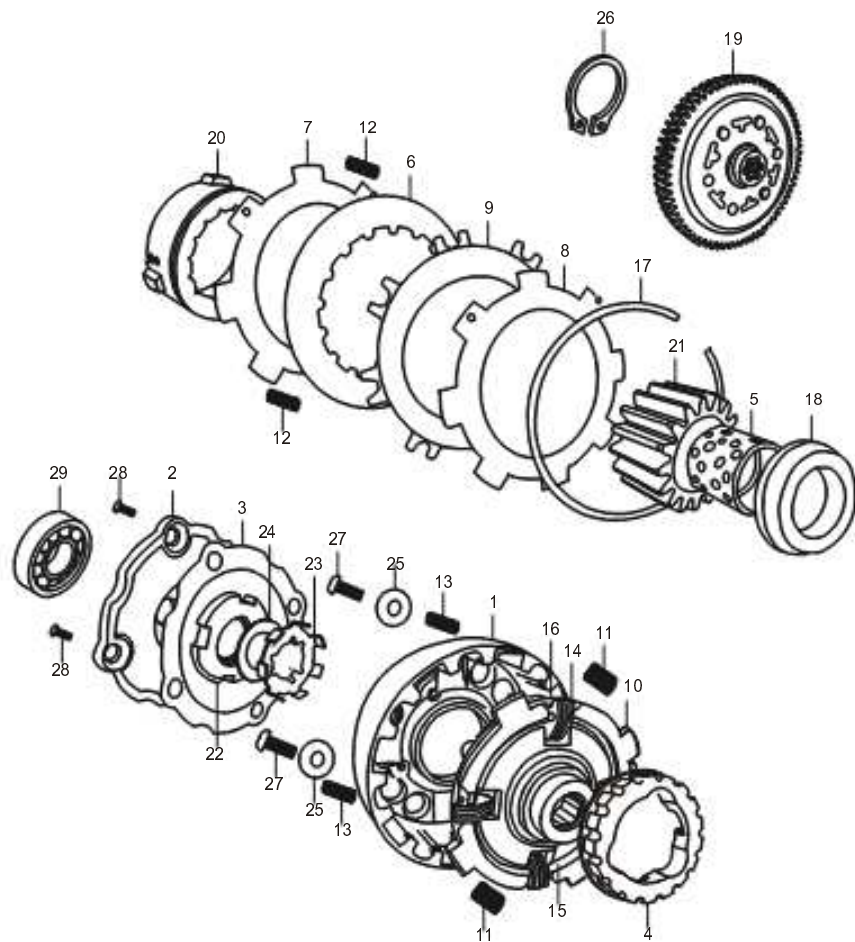
M152FMH

E8A
FIG.E8A

СЦЕПЛЕНИЕ

Ref.No.	Part No.	Description	Q'ty	Remarks
1	M150FMG-2.05.1-07	Clutch body	1	
2	M150FMG-2.05.5-01	Cover	1	
3	M150FMG-2.05-04	Gasket	1	
4	M150FMG-2.05.1-04	Clutch outer hub	1	
5	M150FMG-2.04-05	Sleeve	1	
6	M150FMG-2.05.1.3-00	Friction disk A	2	
7	M150FMG-2.05.1.2-00	Clutch plate assy	1	
8	M150FMG-2.05.1-02	Clutch Plate B	1	
9	M150FMG-2.05.1.4-00	Friction disk B	1	
10	M150FMG-2.05.1.1-02	Driving plate	1	
11	M150FMG-2.05.1-06	Spring clutch	4	
12	M150FMG-2.05.1-03	Spring	4	
13	M150FMG-2.05.1-08	Spring	4	
14	M150FMG-2.05.1.1-01	Block, clutch	28	
15	M150FMG-2.05.1.1-03	Ring	1	
16	M150FMG-2.05.1.1-04	Ring	1	
17	M150FMG-2.05.1-01	Collar	1	
18	M150FMG-2.04-06	Spacer	1	
19	M150FMG-2.04.3-00	Gear assy	1	
20	M150FMG-2.05.1-05	Sleeve	1	

FIG.E8A



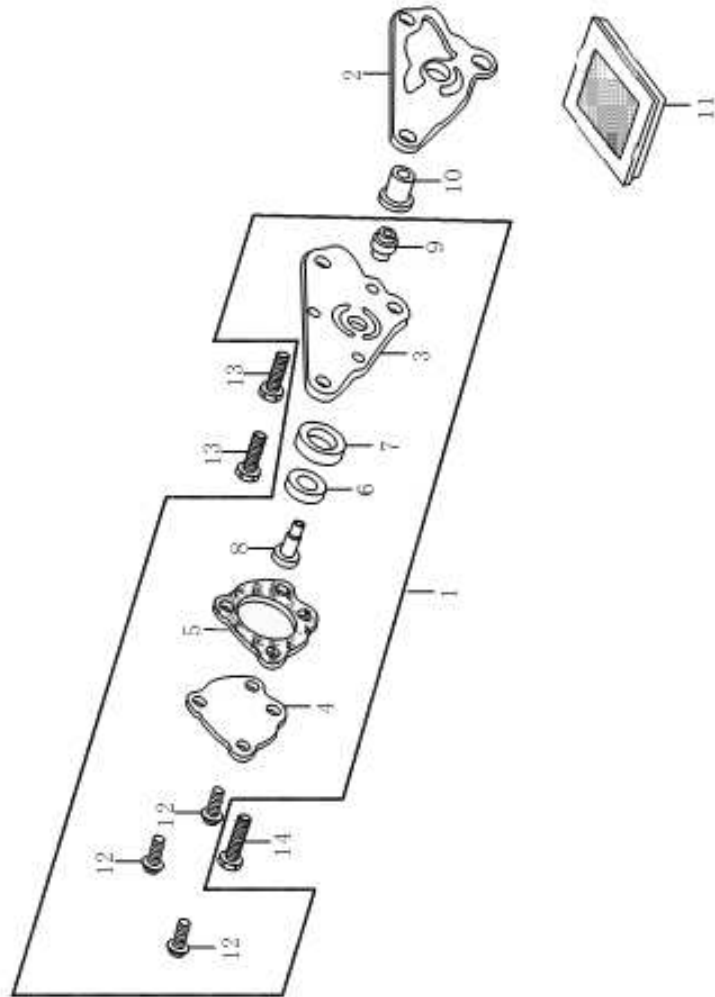
M152FMH

E8A
FIG.E8A

СЦЕПЛЕНИЕ

Ref.No.	Part No.	Description	Q'ty	Remarks
21	M150FMG-2.04-04	Driven gear	1	
22	M150FMG-2.05-03	Lock nut	1	
23	M150FMG-2.05-01	Lock washer	1	
24	M150FMG-2.05-02	Lock washer B	1	
25	GB96-85	Washer 5-140HV	4	
26	GB894.1-86	Washer 17	1	
27	GB818-85	Screw M5x10	4	
28	GB818-85	Screw M5x10	4	
29	GB/T276-94	Bearing 6000	1	

FIG.E9



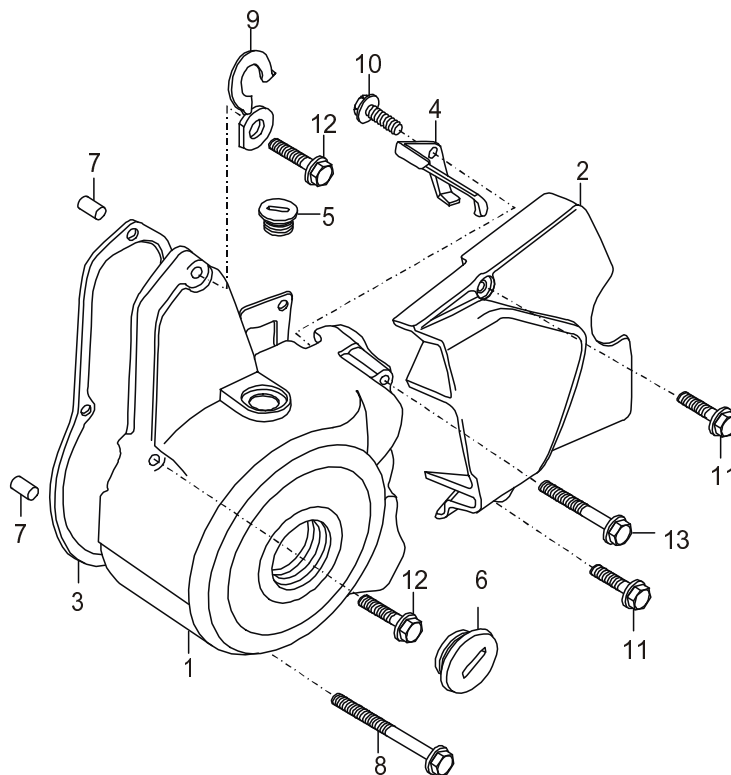
E9
FIG.E9

MACJIO HACOC

Ref.No.	Part No.	Description	Q'ty	Remarks
1	M150FMG-2.12.1-00	Oil pump	1	
2	M150FMG-2.12-01	Gasket, oil pump	1	
3		Body, oil pump	1	
4		Cover, oil pump	1	
5		Gasket, oil pump cover	1	
6		Inner rotor, oil pump	1	
7		Outer rotor, oil pump	1	
8		Shaft rotor, oil pump	1	
9		Sleeve	1	
10	M150FMG-2.12-02	Sleeve	1	
11	M150FMG-2.12.3-00	Oil filter set	1	
12		Screw M5x10	3	
13	GB818-85	Screw M6x16	2	
14	GB818-85	Screw M6x22	1	

M152FMH

FIG.E10



E10

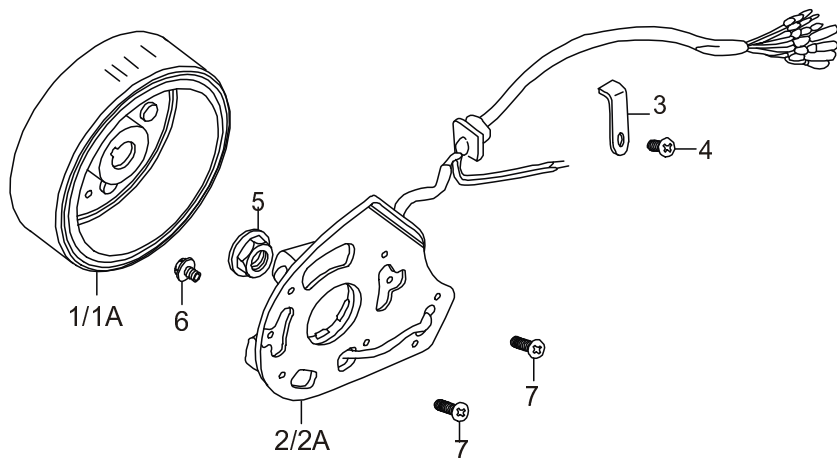
FIG.E10

КРЫШКА КАРТЕРА ЛЕВАЯ

Ref.No.	Part No.	Description	Q'ty	Remarks
1	M150FMG-2.01-14A	Cover front LH. Crankcase	1	
2	M150FMG-2.01-33A	Cover, engine sprocket	1	
3	M150FMG-2.01-17	Gasket, cover LH	1	
4	M150FMG-2.07-01	Clamp	1	
5	244FMI01-19	Cap	1	
6	244FMI01-05	Cap, inspection	1	
7	M150FMG-2.01-35	Dowel pin 8x12	2	
8	GB5787-86	Flange bolt M6x65	1	
9	M150FMG-2.01-23	Clip	1	
10	GB5787-86	Flange bolt M6x12	1	
11	GB5787-86	Bolt M6x25	2	
12	GB5787-86	Flange bolt M6x30	2	
13	GB5787-86	Flange bolt M6x50	1	

M152FMH

FIG.E11



E11

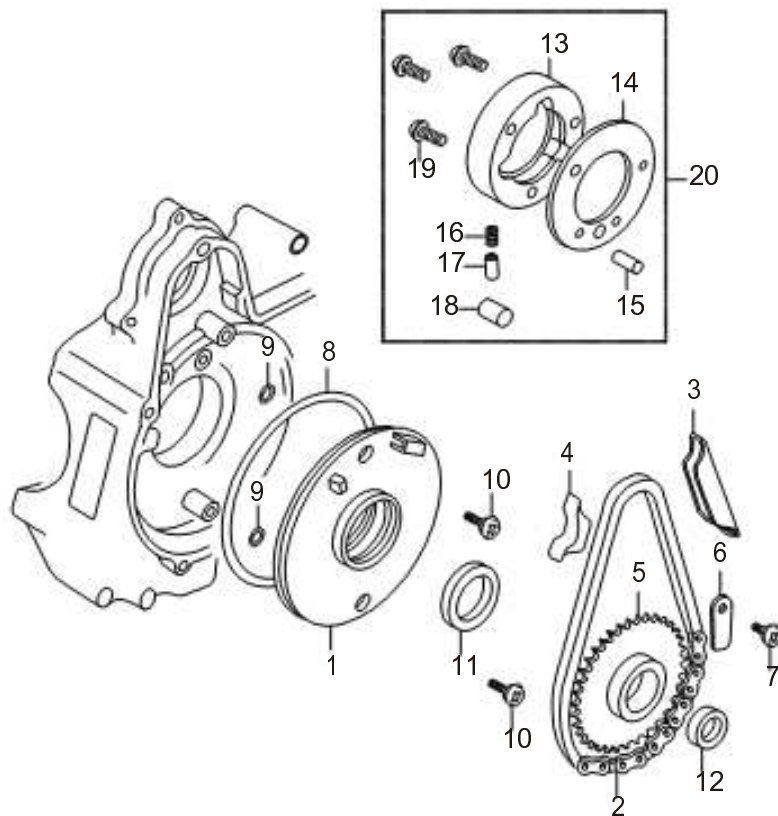
FIG.E11

MAGHETTO

Ref.No.	Part No.	Description	Q'ty	Remarks
1	M150FMG-2.07.1.1-00	Rotor comp	1	
1A	M150FMG-2.07.1.1-00A	Rotor comp	1	
2	M150FMG-2.07.1.2-00	Stator plate	1	
2A	M150FMG-2.07.1.2-00A	Stator plate	1	
3	M150FMG-2.07-02	Plate	1	
4	GB818-85	Bolt M5x6	1	
5	GB6177-86	Flange nut M10	1	
6	GB5787-86	Flange bolt M6x20	2	
7	GB818-85	Bolt M5x16	2	

M152FMH

FIG.E12



M152FMH

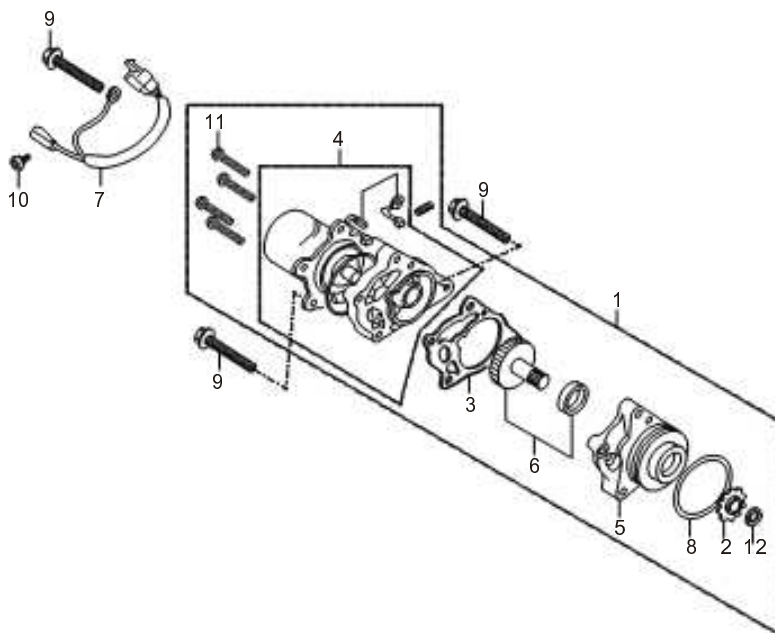
E12

FIG.E12

ПРИВОД СТАРТЕРА

Ref.No.	Part No.	Description	Qty	Remarks
1	M150FMG-2.01-28	Disk insulator	1	
2	M150FMG-2.06D.3-00	Chain, start 62T	1	
3	M150FMG-2.06D-02	Guide I, start chain	1	
4	M150FMG-2.06D-03	GuideII, start chain	1	
5	M150FMG-2.06D.2-00	Plate, start chain	1	
6	M150FMG-2.06D-05	Plate sprocket	1	
7	GB5783-86	Screw M6x12	1	
8	M150FMG-2.01-34	O-ring 107x2	1	
9	244FMI02-30	O-ring 5.8x1.9	2	
10	GB819-85	Screw M6x16	2	
11	M150FMG-2.01-29	Oil seal 30x42x5	1	
12	M150FMG-2.06D-04	Oil seal 18.9x30x5	1	
13		Case comp, start clutch	1	
14		Side plate, start clutch	1	
15		Roller 5x11.8	1	
16		Spring	3	
17		Cap, spring	3	
18		Roller 10 x 10	3	
19	GB819-85	Screw M6 x 16	5	
20		Start clutch assy	1	

FIG.E13



E13

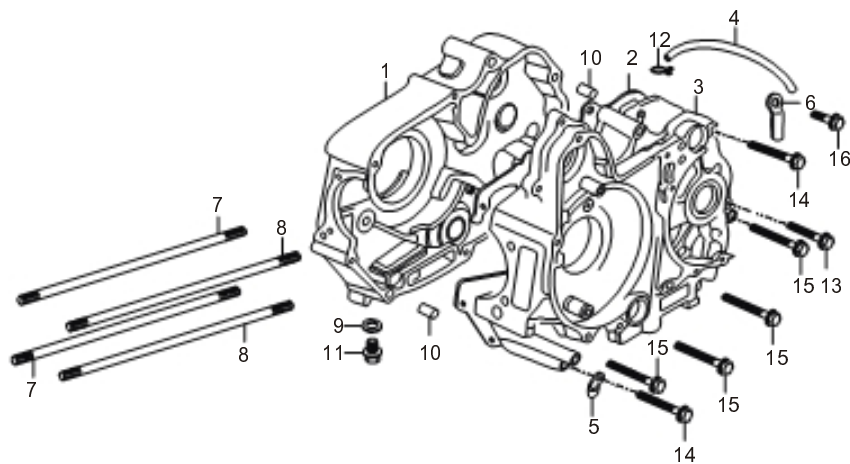
FIG.E13

MOTOP CTAPTEPA

Ref.No.	Part No.	Description	Q'ty	Remarks
1	M150FMG-2.06D.1-00	Starting motor.	1	
2		Small sprocket	1	
3		Gasket	1	
4		Motor comp	1	
5		Front case	1	
6		Gear comp	1	
7		Cable A	1	
8		O-ring A	1	
9	GB5787-86	Bolt M6x50	3	
10		Screw with washer M4x6	1	
11		Screw with washer M5x30	4	
12	GB894.1-86	Circlip 12	1	

M152FMH

FIG.E14



E14

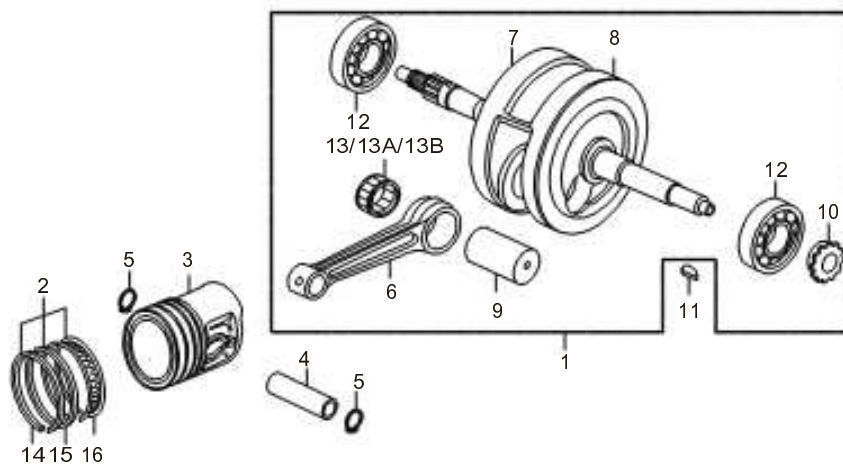
FIG.E14

KAPTEP

Ref.No.	Part No.	Description	Q'ty	Remarks
1	M150FMG-3.01.2-00	Crankcase RH	1	
2	M150FMG-2.01-04	Gasket crankcase, RH	1	
3	M150FMG-3.01.1-00	Crankcase LH	1	
4	M150FMG-2.01.1-04	Air breath	1	
5	M150FMG-2.01-03	Clamp	1	
6	M150FMG-2.10-02	Plate	1	
7	M150FMG-2.02-38	Stud bolt A, cylinder	2	
8	M150FMG-2.02-39	Stud bolt B, cylinder	2	
9	244FMI01-15	Washer d12	1	
10	T151QMI01-13	Dowel pin 10x14	2	
11	M150FMG-2.01-01	Drain plug M12x1.5	1	
12	M150FMG-2.01.1-05	Circlip C9	2	
13	GB5787-86	Flange bolt M6x50	1	
14	GB5787-86	Flange bolt M6x60	2	
15	GB5787-86	Flange bolt M6x65	4	
16	GB5787-86	Bolt M6x12	1	

M152FMH

FIG.E15



M152FMH

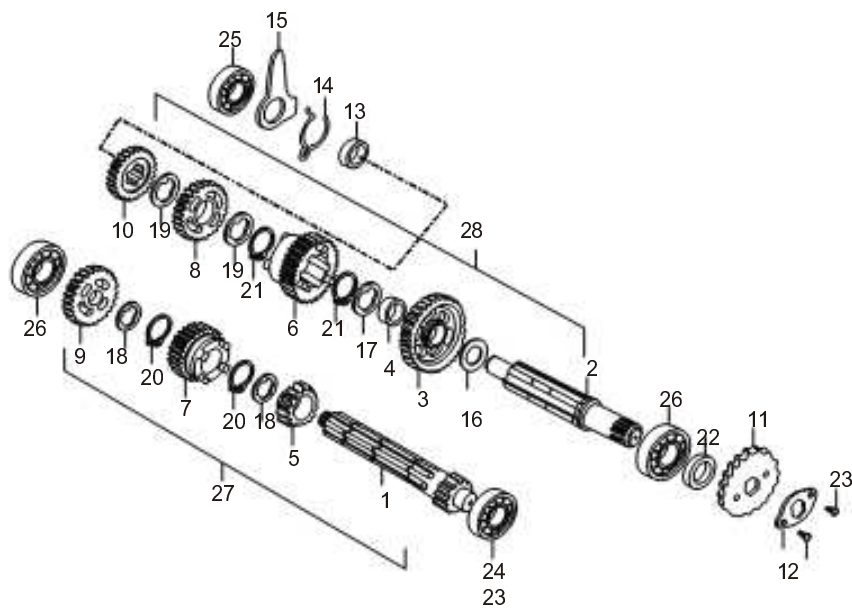
E15

FIG.E15

КОЛЕНВАЛ / ПОРШЕНЬ

Ref.No.	Part No.	Description	Q'ty	Remarks
1	M150FMG-2.03.1-00	Crankshaft comp	1	
2		Ring set, piston	1	
3	M152FMH-2.03-02	Piston	1	
4	M152FMH-2.03-05	Pin piston	1	
5	T151QMI03-13	Circlip, piston pin	2	
6		Rod, connecting	1	
7		Crank set, RH	1	
8		Crank, LH	1	
9		Pin, crank	1	
10		Sprocket, timing	1	
11		Key	1	
12		Bearing 304	2	
13		Needle bearing (red)	1	
13A		Needle bearing (blue)	1	
13B		Needle bearing (white)	1	
14	P152QMI03-10	Ring set (first)	1	
15	P152QMI03-11	Ring set (second)	1	
16	P152QMI03-12	Ring set (oil)	1	

FIG.E16



M152FMH

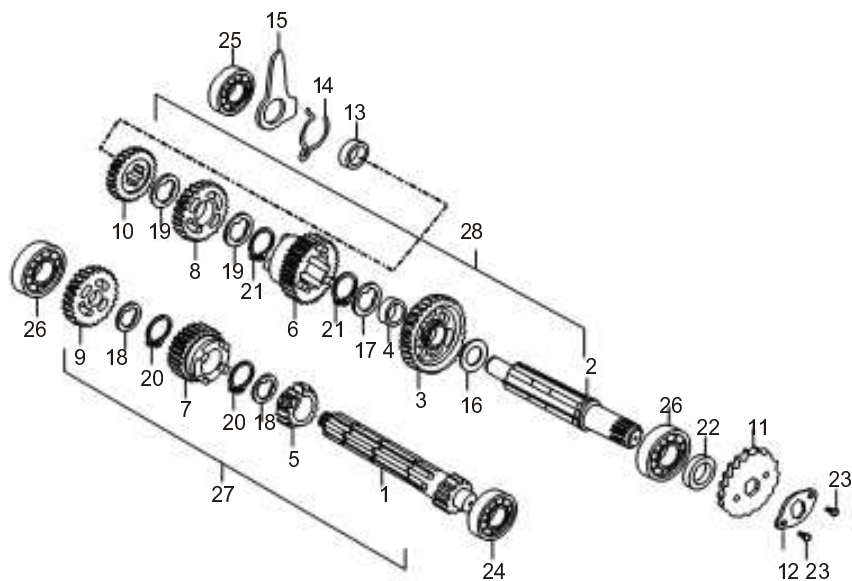
E16

FIG.E16

ТРАНСМИССИЯ

Ref.No.	Part No.	Description	Q'ty	Remarks
1	M150FMG-3.04.1-00A	Countershaft	1	
2	M150FMG-3.04.2-00	Drive shaft	1	
3		1 st gear, countershaft 34T	1	
4		Bush 20x9	1	
5		2 nd gear, drive shaft 17T	1	
6		2 nd gear, countershaft 29T	1	
7		3 rd gear, drive shaft 21T	1	
8		3 rd gear, countershaf 26T	1	
9		4 th gear, drive shaft 24T	1	
10		4 th gear, countershaf 23T	1	
11	M150FMG-2.04-02	Sprocket, drive	1	
12	M150FMG-2.04-03	Plate, sprocket	1	
13		Bush	1	
14		Damper spring	1	
15		Stopper, gear shifting cam	1	
16		Thrust washer 17	1	
17		Spline washer 20	1	
18		Spline washer 17	2	
19		Spline washer 20	2	
20		Circlip 17	2	

FIG.E16



E16

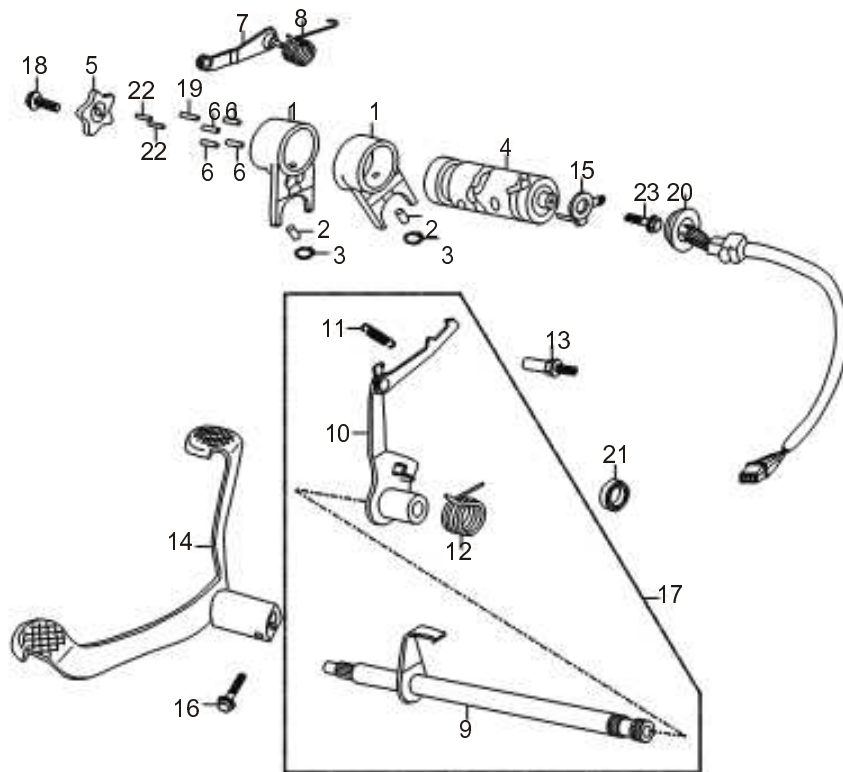
FIG.E16

ТРАНСМИССИЯ

Ref.No.	Part No.	Description	Q'ty	Remarks
21		Circlip 20	2	
22	M150FMG-2.01-13	Oil seal 17x29x5	1	
23	GB5783-86	Bolt M6x8	2	
24	GB/T276-94	Bearing 6001	1	
25	GB/T276-94	Bearing 6201	1	
26	GB/T276-94	Bearing 6203	2	
27	M150FMG-3.04.1-00	Countershaft assy	1	
28	M150FMG-3.04.2-00	Drive shaft assy	1	

M152FMH

FIG.E17



M152FMH

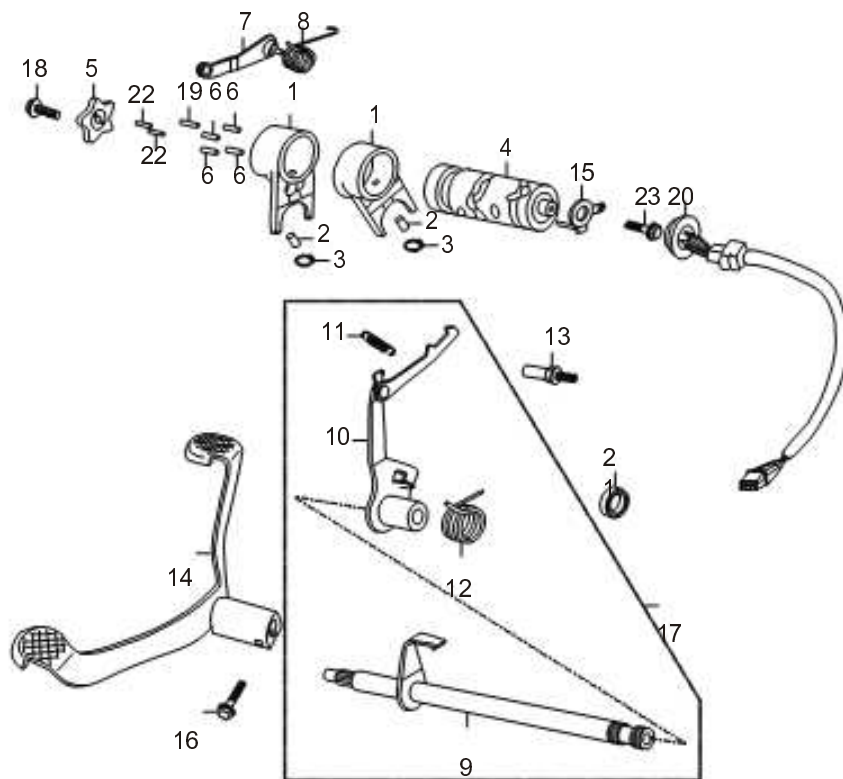
E17

FIG.E17

МЕХАНИЗМ ВЫБОРА ПЕРЕДАЧ

Ref.No.	Part No.	Description	Q'ty	Remarks
1		Fork, gear shifting	2	
2		Guide pin	2	
3		Clamp	2	
4	M150FMG-3.10.2-00	Cam, gearshift	1	
5		Plate, gearshift	1	
6		Pin, gearshift cam	4	
7	M150FMG-3.10.3-00	Stopper plate, gearshift	1	
8	M150FMG-3.10-03	Spring, gearshift return	1	
9	M150FMG-2.10.1-00A	Spindle comp, gearshift	1	
10		Arm comp, gearshift	1	
11		Spring gearshift arm	1	
12		Spring gearshift arm	1	
13	M150FMG-2.10-01	return	1	
14	M150FMG-2.10.4-00A	Bolt, spring return	1	
15	M150FMG-2.10.5-00	Lever, Gear shift	1	
16	GB5783-86	Contactora, gear shift	1	
17		Gearshift assy	1	
18	GB5783-86	Bolt M6x16	1	
19		Needle d3x8.5	1	
20	M150FMG-2.07.1.3-00	Wire assy	1	

FIG.E17



E17

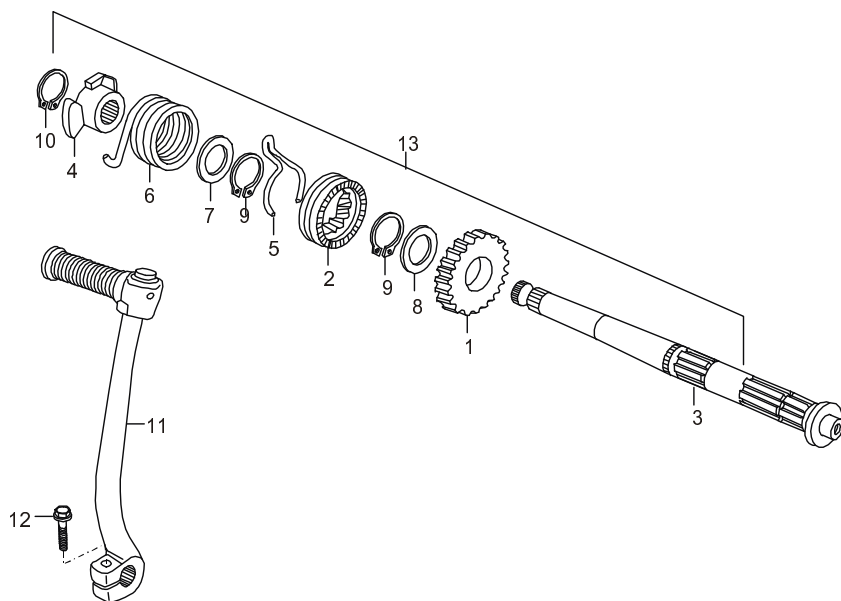
FIG.E17

МЕХАНИЗМ ВЫБОРА ПЕРЕДАЧ

Ref.No.	Part No.	Description	Q'ty	Remarks
21	M150FMG-2.01-12	Oil seal 11.6x24x10	1	
22		Needle d4x10	2	
23	GB70-85	Bolt M6x14	1	

M152FMH

FIG.E18



E18

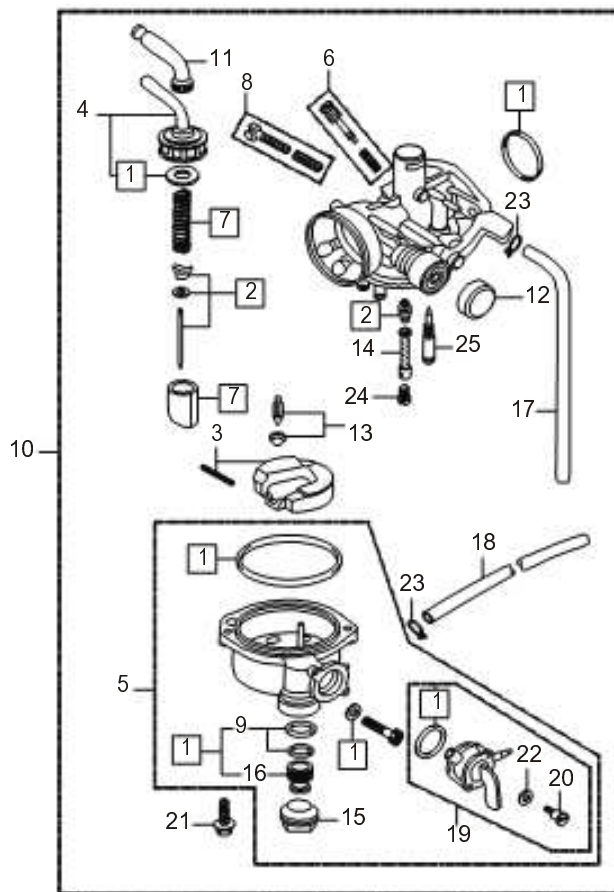
FIG.E18

КИК СТАРТЕР

Ref.No.	Part No.	Description	Q'ty	Remarks
1		Gear, kick starter 22T	1	
2		Ratchet kick starter	1	
3	M150FMG-3.06-00	Spindle kick starter	1	
4	M150FMG-3.06-05	Seat comp, spring	1	
5		Spring, kick starter gear	1	
6	M150FMG-3.06-04	Spring, spindle return	1	
7	M150FMG-2.06-09	Washer 17	1	
8		Thrust washer 20	1	
9		Circlip 20	2	
10	M150FMG-2.06-08	Circlip 16	1	
11	M150FMG-2.06.1-00	Lever Assy kick starter	1	
12	GB5783-86	Bolt M6x20	1	
13		Spindle kick starter assy	1	

M152FMH

FIG.E19



E19

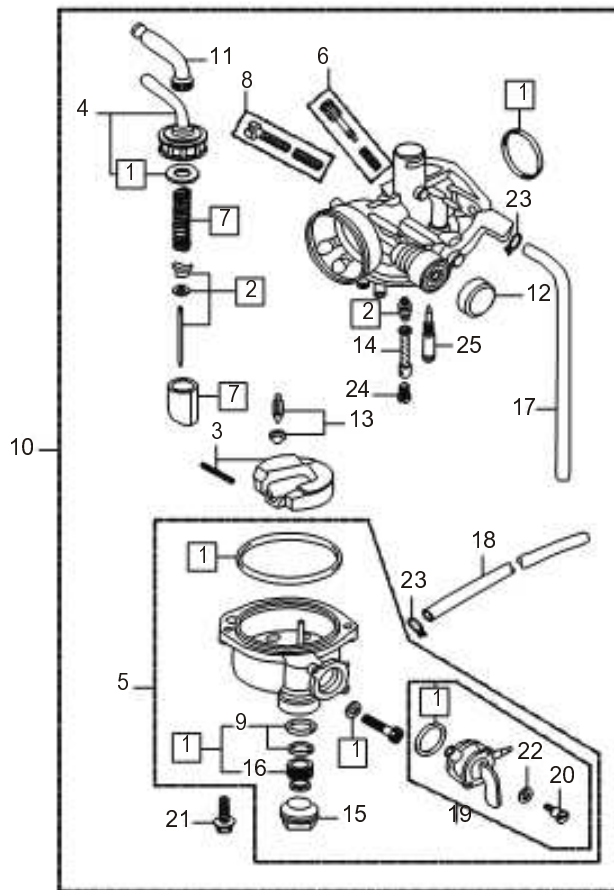
FIG.E19

КАРБЮРАТОР

Ref.No.	Part No.	Description	Q'ty	Remarks
1		Gasket set	1	
2		Jet needle set	1	
3		Float set	1	
4		Cap, throttle valve	1	
5		Chamber set, float	1	
6		Screw A	1	
7		Valve set, throttale	1	
8		Screw B	1	
9		Gasket B	1	
10		Carburetor assy	1	
11		Cap, cable	1	
12		Dust seal	1	
13		Pin, float	1	
14		Needle jet	1	
15		Cap, filter	1	
16		Filter, fuel	1	
17		Tube breather	1	
18		Tube overflow	1	
19		Cock fuel	1	
20		Bolt M3x12	1	

M152FMH

FIG.E19



E19
FIG.E19

КАРБЮРАТОР

Ref.No.	Part No.	Description	Q'ty	Remarks
21		Screw with washer M4x18	1	
22		Spring washer 3	1	
23		Circlip (B6.5)	1	
24		Main jet #75	1	
25		Pilot jet #40	1	

M152FMH